

Historic, Archive Document

Do not assume content reflects current scientific knowledge, policies, or practices.

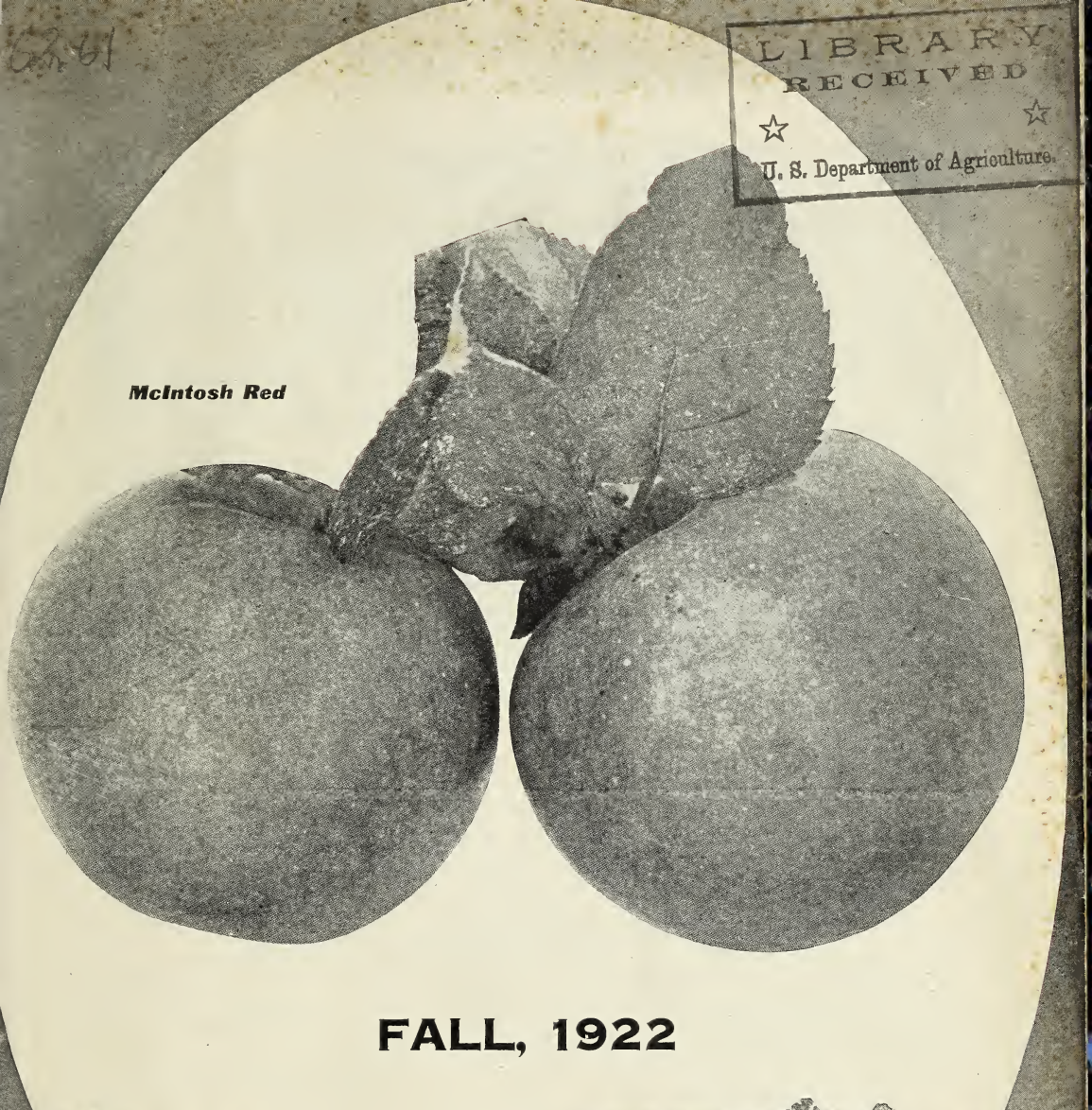


LIBRARY
RECEIVED

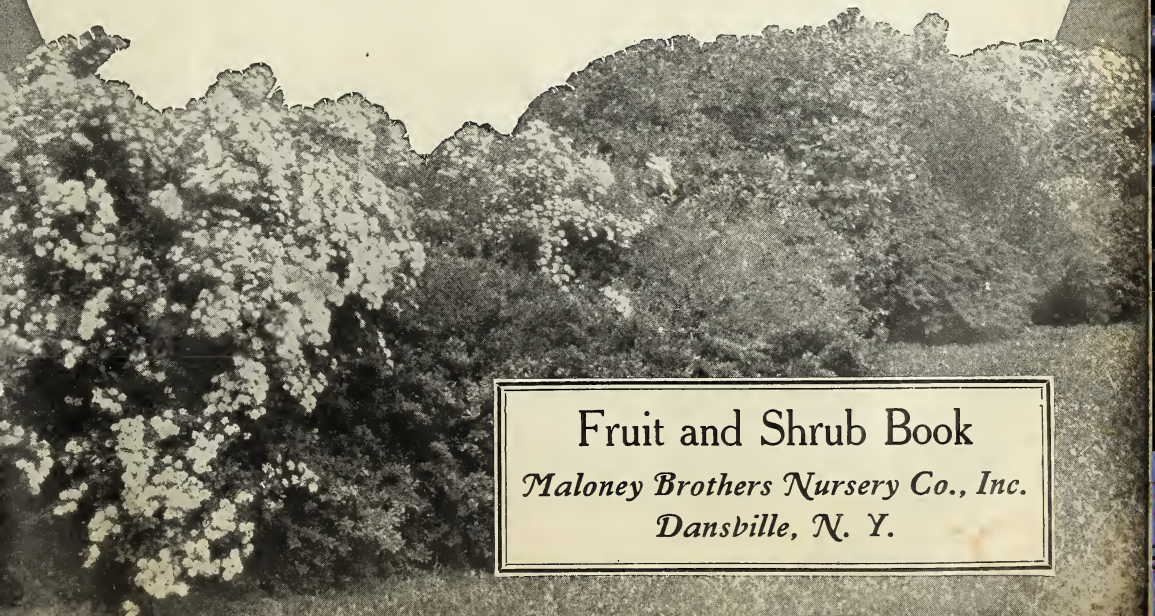


U. S. Department of Agriculture.

McIntosh Red



FALL, 1922

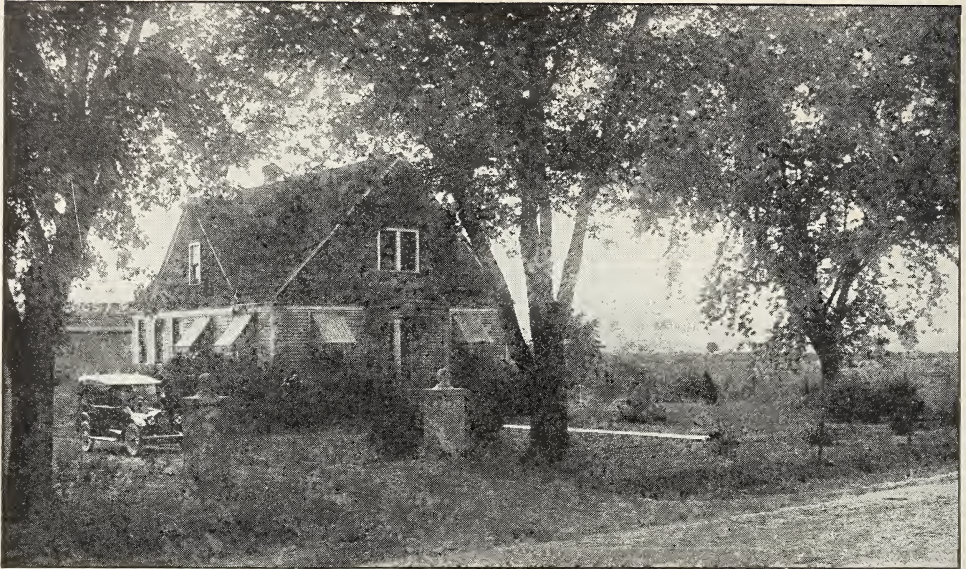


Fruit and Shrub Book
Maloney Brothers Nursery Co., Inc.
Dansville, N. Y.

Established
1884

FALL, 1922

Capital
\$150,000.00

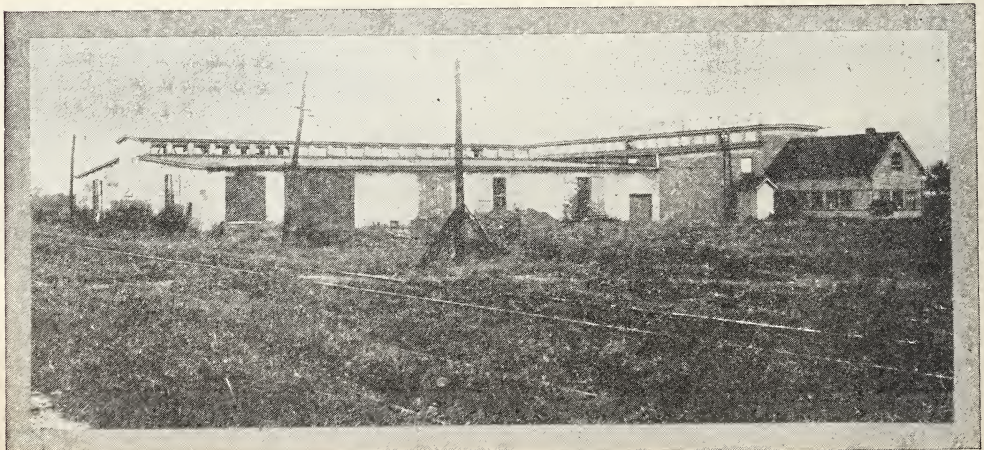


Our New Office Where Your Mail Receives Prompt Attention.

FOR many years this corporation has been owned and operated by Maloney Brothers, sons of the pioneer nurseryman who originally founded the business in 1884. During the past summer the name of the corporation has been changed from "Maloney Bros. & Wells Company" to "Maloney Brothers Nursery Company, Inc.," the business policy and management remaining precisely the same as heretofore.

The same Maloney stock and service are ready for you. In fact we can say the Stock is better than ever this Fall for we have had a very exceptional growing season. As to service, well it's up to you to be satisfied. We are here to make good in every way.

W. J. MALONEY, Secretary.



Our New and Modern Packing House 200 x 200 Feet, where our Trees are Carefully Sorted and Packed

CSA 9-22 1922

Our Guarantee

We Strive to Avoid Mistakes

But in the event that any nursery stock sold by us should prove untrue to name under which it is sold, we hereby agree, on proper proof of such untruthfulness to name, to replace the original order or to refund the purchase price. Except for such liability, and in respect to all nursery stock sold by us, we give no warranty, express or implied, as to description, quality productiveness or any other matter.

MALONEY BROS. NURSERY CO., Inc., DANSVILLE, N. Y.

39th Year

400 Acres

Capital \$150,000.00

Certificate

No. 1089

STATE OF NEW YORK

DEPARTMENT OF FARMS AND MARKETS

BERNE A. PYRKE, COMMISSIONER

Certificate of Inspection of Nursery Stock

This is to certify that the nursery stock of MALONEY BROS. NURSERY CO., INC., of DANSVILLE, County of LIVINGSTON, State of NEW YORK, was duly examined in compliance with the provisions of Article 14 of the Farms and Markets Law and was found to be apparently free from any contagious or infectious disease or diseases, or the San Jose scale or other dangerously injurious insect pest or pests. This certificate expires September, 1, 1923.

Dated, Albany, N. Y., Sept. 1, 1922.

BERNE A. PYRKE, Commissioner.
By GEO. G. ATWOOD,
Director Bureau of Plant Industry.

Our References

Merchants & Farmers Bank,
Dansville, N. Y.

R. G. Dun Commercial Agency,
New York City

Livingston County Trust Co.,
Geneseo, N. Y.

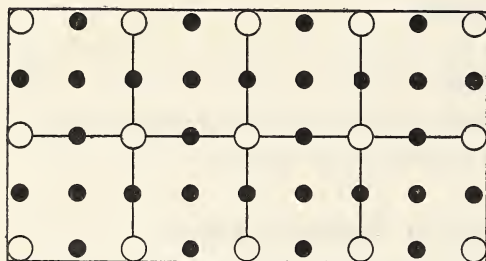
Bradstreet's Com'rcial Agency,
Chicago, Ill.

Any business house in Dansville

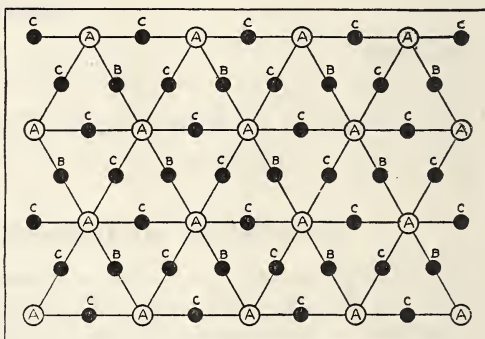
We Call Your Attention To the Advisability of Fall Planting

because the uniform moisture and temperature of the ground are more favorable to root formation, the root action being well established long before the ground is fit for planting in the Spring—adverse conditions commonly prevailing in the Spring, such as making gardens, usual and regular spring farm work and heavy rains making it many times impossible to plant until very late, thus shortening the growing season. Fall is recognized as an ideal time to plant, for by setting now you will gain fully half a growing season over Spring planting.

Suggestions on Orchard Planting



SQUARE PLAN for Setting an Orchard. Open circle represents permanents, 40 ft. apart and dots fillers; 20 ft. apart. The latter to be removed in twenty years. These are distances adopted by most planters.



TRIANGULAR PLAN for Setting an Orchard. A permanent, set 40 ft. apart. C and B fillers, 20 feet apart, C fillers to be removed in fifteen years. B filler to be removed in 25 years. These are the distances adopted by most planters.

Number of Trees or Plants to an Acre.
The following table will show how many trees or plants are required for an acre at any distance apart.

Suitable Distances for Planting

	Square Method	Triangular Method
40 feet apart	27 trees	31 trees
35 feet apart	35 trees	40 trees
30 feet apart	50 trees	55 trees
25 feet apart	70 trees	80 trees
20 feet apart	110 trees	125 trees
18 feet apart	135 trees	155 trees
15 feet apart	195 trees	225 trees
12 feet apart	305 trees	350 trees
10 feet apart	435 trees	505 trees
8 feet apart	680 trees	775 trees
6 feet apart	1,210 trees	1,600 trees
5 feet apart	1,745 trees	2,010 trees
4 feet apart	2,722 trees	3,145 trees
3 feet apart	4,840 trees	5,590 trees
2 feet apart	10,890 trees	12,575 trees
1 foot apart	43,560 trees	50,300 trees

Apples, Standard	30 to 40 feet
Apples, Dwarf	8 to 10 feet
Pears, Standard	18 to 20 feet
Pears, Dwarf	10 feet
Peaches and Apricots	16 to 18 feet
Cherries, Sweet	18 to 20 feet
Cherries, Sour	15 to 18 feet
Plums	16 to 20 feet
Quinces	10 to 12 feet
Grapes	8 to 10 feet
Currants	3 to 4 feet
Gooseberries	3 to 4 feet
Raspberries	3 to 4 feet
Blackberries	5 to 7 feet
Strawberries	1 ½ by 1 ½ feet
Asparagus, in beds	1 by 1 ½ feet
Asparagus in fields	1 by 3 feet

Planting and Care of Stock

Care of Stock on Arrival—All stock should be planted immediately on arrival; but if not convenient to do so, open bundle and heel roots in the ground, covering them thoroughly.

Plant When the Soil is Reasonably Dry—In such condition as you would when planting corn or potatoes.

Pruning—Roots are sometimes bruised in digging. For best results it is imperative that you trim about one-fifth of the root, making a nice smooth cut, thus removing all bruised ends. Cut back one-half of the limb growth.

Planting—Dig the holes deep enough so the trees will be set one inch deeper than they were in the nursery row, and wide enough to admit the roots of the tree to spread out in their natural position. Having dug the hole as directed, let one person hold the tree upright and the other shovel in the earth; fill the hole about one-fourth with the richest dirt, pack it solidly, then put in one pail of water, now fill the hole two-thirds with dirt, pack firmly, then fill up the balance of the hole and pack firmly.

Drainage. Your time and money are wasted if you plant on undrained soil. All hollows should be avoided when selecting positions for planting.

Watering Newly-Planted Nursery Stock. A good soaking once or twice a week if the ground is dry should be resorted to. A mulch of long manure, grass clippings or straw helps to retain this moisture and should be provided if possible.

Labels. Labels should be removed and some other method adopted for recording varieties. The wires will cut and damage the limbs.

Cultivation.—Ten days after the tree has been planted work around it to keep the soil loose; do this about every two weeks during May, June, July and August.

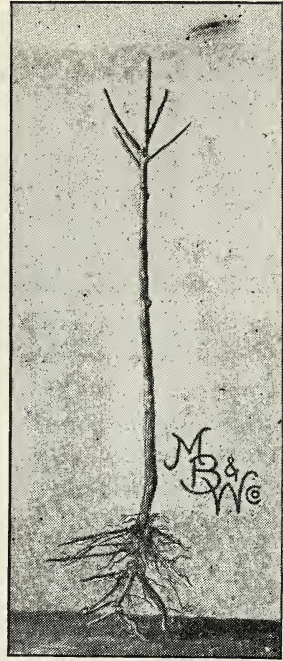
These planting directions apply to shrubs and roses, as a matter of fact everything except evergreens. When planting evergreens prune the roots only.

Trimming Shrubbery. Newly planted shrubbery should be cut back severely; from one-third to one-half of the top should be removed. If the planting is done in the Fall it is usually best to defer this trimming until early the following spring.

Shrubs that bloom before the middle of June should be trimmed just after the blooming period to ensure a profusion of bloom the following year. Shrubs like Altheas and Hydrangeas which bloom later should be pruned in the Winter. Fading flowers and forming seed vessels ought, where practicable, to be removed, that the strength which otherwise would go into ripening seeds may be diverted to forming flower buds for the ensuing year. In trimming shrubs avoid stiff unnatural results and cut so the plant will bear long, graceful branches.

Winter Protection. Most of us have some varieties which are a little delicate or which have so recently been transplanted that some Winter protection is necessary. A mulch of manure about one inch deep, spread about such plants after the ground becomes frozen, prevents the alternate freezing and thawing which is disastrous. Leaves are valuable for mulching, especially for the perennial beds; they may be confined by branches of wire netting.

If you use barnyard fertilizer for mulching, allow it to remain until about the 10th of April then work it into the ground for by so doing it will greatly enrich the land, as this is conducive to a healthy, vigorous growth, thus bringing your trees into bearing earlier and your plants, shrubs, vines, etc., will be effective much sooner.



Correct Way to Prune Trees for Planting



Correct Way to Prune Shrubs

Maloney Cash Discount, Prepaid Express and Freight Offer

FOR FALL, 1922

We allow 6% Discount on All Cash Orders
received before Oct. 15th--3% after that date

AND

We Prepay Transportation Charges on all cash orders of \$7.50 or more received during the entire fall season of 1922 to all points in the following states : Connecticut, Delaware, Illinois, Indiana, Maine, Maryland, Massachusetts, Michigan, New Hampshire, New Jersey, New York, Ohio, Pennsylvania, Rhode Island, Vermont, Virginia, West Virginia.

To all other points we prepay one-half transportation charges.

*All orders of \$7.50 and up to \$35.00
will be delivered by Express prepaid.*

*Those of \$35.00 and up will be de-
livered by Freight Prepaid.*

Our Shipping Season usually opens about the 15th of October and continues until cold weather.

Order Early. As our orders are shipped in the rotation they are received, and as we cannot delay orders received first for orders coming later on, we advise the placing of orders early.

Rates. 50 trees at hundred rate providing there are not less than ten of any one variety.

Terms. We will ship trees and plants C. O. D. providing 25 per cent of the

total of your order is sent in cash. If the order goes by express you pay the balance to your express agent upon arrival. If the order goes by freight you pay the balance at your bank, where you will also find Bill of Lading, which you present to your freight agent who will deliver shipment to you.

How to Remit. By Check, Bank Draft, Express Money Order, Post Office Money Order or Registered Letter.

Boxing and Packing Free. We box and pack all shipments without charge.

Maloney Trees are the Finest that Skill and Science can Produce.
Direct from our Upland Nurseries to You at Wholesale Prices.

DANSVILLE'S PIONEER WHOLESALE NURSERIES



Apple Trees

Wholesale Prices of All Varieties of Hardy Upland Grown Apple Trees

Budded on Whole Branch Root Imported French Seedlings

		Height	Caliper		Each	Ten	Hundred
Largest Size	2 Year	6 to 7 Feet	$\frac{3}{4}$ and up	XXX	.75	\$7.00	\$60.00
Medium Size	2 Year	5 to 6 Feet	$\frac{5}{8}$ to $\frac{3}{4}$	XX	.70	6.50	55.00
Smaller Size	2 Year	4 to 5 Feet	$\frac{1}{2}$ to $\frac{5}{8}$	X	.65	6.00	50.00
Largest Size	1 Year	3 $\frac{1}{2}$ Feet and up	Sturdy Buds	XXX	.75	7.00	55.00

Fifty at hundred rate, providing not less than ten of any one variety.

PARCEL POST. First class 3 ft. trees sent by parcel post, postage prepaid, 55 cents each, \$5.00 per 10.

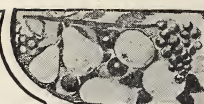
6% Discount on all Cash Orders received before October 15th. 3% after that date.

An Apple Orchard with Maloney Upland Trees a Good Investment

For the convenience of our customers, we have printed in heavy type the names of the best and most profitable varieties.

Why Planters are More Successful with Maloney Quality Trees. Because we aim from the very beginning to give our patrons the most that can be had for the money. Too many Nurserymen economize by propagating on Western grown seedlings. No nurseryman can conscientiously do this for he well knows that Western seedlings are more or less troubled with that harmful crown and root gall. We eliminate this feature by importing our seedlings from France. Any of your inspectors will tell you that trees so propagated are longer lived and will net you greater returns. It is not so surprising after all that **Maloney Quality Trees** are being planted by thousands in every state in the Union east of the Rockies.

Apple Trees should be planted on elevated ground rather than in a hollow or low ground, and they require fertile soil, such as is needed for corn and wheat.



Summer Varieties

Early Harvest. Medium to large size; pale yellow; tender, with a mild, fine flavor. Tree an erect grower and a good bearer; excellent for orchard and garden; one of the first to ripen. Middle to end of August.

Golden Sweet. Large, pale yellow, tree a good grower and very productive. August to September.

Red Astrachan. Tree hardy and regular bearer, a very vigorous grower; fruit large, roundish, nearly covered with deep crimson overspread with a thick bloom; juicy, rich and beautiful. July and August.

Sweet Bough. Large, pale yellow; sweet, tender and juicy. Tree a compact grower and abundant bearer. August.

Williams Early Red. Medium sized; dark red, sometimes yellow splashed; flesh is crisp, tender, juicy and sub-acid. August.

Yellow Transparent. Medium size, roundish, oblate, slightly conical; skin pale yellow when fully matured; flesh tender, juicy, sprightly, sub-acid; good. August.

Autumn Varieties

Alexander. Of Russian origin. Large, deep red or crimson; flesh yellowish white, crisp, tender, with pleasant flavor. Tree very hardy. October.

Autumn Strawberry. Medium, streaked, tender, juicy, fine, vigorous and productive. September to October.

Duchess of Oldenburg. Summer. Medium size; red striped; flesh white, juicy and excellent flavored. Trees are natural dwarf growers and make fine fillers; require small root and branch space. Crops nearly always large. One of the important varieties for all sections north of Mason and Dixon line. August and September.

Fall Pippin. Very large, yellow, tender juicy and rich. Fine in all localities; tree vigorous. September and October.

Gravenstein. An attractive and excellent quality apple. Fruit large and uniform in size, skin thin, tender, greenish yellow overlaid with dark red. September to November.

Maiden's Blush. Large flat; pale yellow with a red cheek; beautiful; tender and pleasant, but not high flavored. Tree an erect grower, and a good bearer. A valuable market apple. September and October.

Pound Sweet. A very large, round yellow russet apple, very sweet and rich. Tree a vigorous, rapid, upright grower; valuable. October and November.

Pumpkin Sweet. Very large; yellowish russet, sweet and rich. Valuable. October and November.

Rambo. Medium, red and yellow. Mild flavor. Excellent old variety. Oct. to Dec.

Winter Varieties

Baldwin. This is the leading commercial variety in the American markets. It is to apples what Elberta is to peaches and Montmorency is to cherries. One of the best storage apples for export trade. Thousands of barrels of this fruit are exported to England annually. Baldwin is planted extensively and succeeds wonderfully well in all states east of the Mississippi. No variety yields larger crops, bears shipment better or is more attractive in colors size and shape. It is highly esteemed for an eating and cooking apple. Fruit large, bright red, crisp, juicy and rich. Trees vigorous, upright and productive. For a commercial orchard, it can be relied upon. If ever in doubt what kind of apples to plant, select Baldwin. It should be in every orchard. December to March.

Belleflower. Adapted to the northern and middle states; highly esteemed for its excellent dessert qualities. Oct. to Feb.

Ben Davis. Is hardy and attractive, succeeds wherever apples are grown. There is no apple that has more favors on account of its hardiness, productiveness, beauty and endurance in shipping. It is excellent for cooking.

Delicious. No new variety has ever so quickly gained popularity in so many different apple sections of our country. Fruit large, nearly covered with brilliant dark red, flesh fine grained, crisp and melting, juicy with a delightful aroma; of very highest quality. A splendid keeper and shipper. Tree one of the hardiest. November to April.

Fameuse. (Snow Apple). Medium size; deep crimson; flesh snowy white, melting and delicious, one of the finest dessert fruits and valuable for market; a good baking apple. Oct. to Dec.

Gano. An improved Ben Davis, adding to the good qualities of that variety a much handsomer fruit of deep, dark red, that brings a ready sale in market. Dec. to March.

Gilliflower. (Black.) An old dessert apple; tree a good vigorous grower and a reliable cropper. October to February.

Grimes' Golden. Medium to large size; skin golden yellow, sprinkled with gray dots; flesh crisp, tender, juicy, sprightly, very good to best. Tree is very hardy and productive, and one of the best fillers, as it comes into bearing very early. December to April.

Hubbardston Nonesuch. Large, striped yellow and red; flesh yellow, juicy and tender, with an agreeable flavor of acidity and very valuable; of the finest quality and very valuable; strong grower. Nov. to March.

Jonathan. A beautiful red apple, highly flavored and of excellent quality, being tender, juicy, spicy, and rich—a splendid family sort and highly profitable for market. Tree long-lived, productive, and an early bearer. Will keep well without special care and also stand much handling. November to January.



DANVILLE'S PIONEER WHOLESALE NURSERIES



King. (King of Tompkins Co.) When you see in the market apples of extraordinary size, beautiful red in color, specimens that attract the attention of everybody who passes by, you may know that these are the King apple. November to January.

Mammoth Black Twig. Resembles a large Winesap. Dark red. If a late winter apple is desired you will make no mistake in adding it to your list. December to April.

McIntosh Red. An exceedingly valuable, hardy, attractive apple; good size; nearly covered with red. Flesh white, fine, very tender, juicy and refreshing. Tree hardy, vigorous, a good annual bearer—comes into fruiting early, yielding large crops. Do not overlook McIntosh when selecting varieties for commercial and orchard planting; has no superior as an early winter apple. October to January.

Newtown Pippin. Medium to large; yellow; delicious flavor; a long keeper. Known throughout Virginia as Albemarle Pippin. November to May.

Northwestern Greening. A round, large, attractive, greenish yellow apple; flesh fine grained, juicy, firm, good quality. October to April.

Northern Spy. A hardy, large, red, winter apple. Flesh juicy, rich, crisp, tender, aromatic, of good flavor. Tree very healthy, strong grower, rugged. Blossoms very late, escaping frosts. Dec. to March.

Rhode Island Greening. This apple has a recognized standing, both in domestic and foreign markets and sells readily for good prices. Size large. Flesh yellowish, firm, fine grained, crisp, tender, juicy, sprightly sub-acid, very good. Skin grass-green to yellow, sometimes with brownish-red blush. Tree large, strong, vigorous, wide spreading. Ripens in December, keeps until April.

Rome Beauty. Large, round; mottled and striped in different shades of red; flavor and quality way above the average; appearance and size are its valuable points. Fine quality for use and for handling make it popular with consumers and dealers. Dec. to March.

Roxbury Russet. Medium to large. Surface rough, greenish covered with russet. Dec. to May.

Smokehouse. Fruit medium to large, uniform size and shape. Color yellow or greenish mottled with rather dark red, sometimes deepening to a solid bright red. October to March.

Spitzenburg. (Esopus.) Unequaled for its high rich flavor, color deep red; flesh yellow, crisp, rich and excellent. December to March.

Stark. Large, striped, mild, sub-acid, good, valuable as a keeper. Jan. to May.

Stayman's Winesap. Medium to large, attractive; green and yellow, almost hidden by dark red stripes; flesh yellow, not in the least mealy; plenty of juice; quality the finest. Tree a quick and large grower, bears young, often

producing a barrel to a tree when five years old. Bears every year, crops uniformly heavy. December to April.

Sutton Beauty. Tree vigorous, upright, spreading, fruit uniform in size and shape, fine grained, crisp, tender, very good. Color bright red striped with carmine. Nov. to March.

Tolman Sweet. Medium size; color, light yellow; flesh white, firm, rich, and very sweet. Excellent for winter baking. This is the old favorite, highly prized for baking, etc. Productive, an early bearer, long keeper. November to April.

Twenty Ounce. Very large, yellow striped, red, fine quality apple; good keeper. Tree vigorous grower, productive. Oct. to Jan.

Wagener. (Red Winter Apple.) Wagener is one of the most beautiful winter apples ever grown. It is of the highest quality, the flesh being crisp, tender and aromatic. We know of no apple possessing greater beauty or of finer quality than the Wagener. Dec. to May.

Wealthy. Fruit large, roundish; skin smooth, oily, covered with a dark red. Flesh white, tender, juicy, vinous, sub-acid; quality very good. This variety is particularly valuable for cold climates because the tree is very hardy. Wealthy is being planted largely for commercial purposes as a filler in many sections. Oct. to Jan.

Winter Banana. Fruit large size, perfect in form; golden yellow, and beautifully shaded and marbled with bright crimson red; flesh lemon-yellow, fine grained, sub-acid; rich, aromatic flavor, and of the highest quality. A good keeper. November to January.

Wolf River. Fruit is very large, some specimens weighing 27 ounces; flattened conical, highly colored. An excellent cooking Apple. September to December.

York Imperial. The fruit is of medium size, skin yellow and almost wholly covered with two shades of red, the darker one disposed in distinct stripes. November to February.

Best Hardy Crab Apples

Hyslop. Fruit large, deep crimson; produced in clusters; flesh yellow, sub-acid; and popular on account of its large size, beauty and hardness. October.

Transcendent. This is one of the best of all crab apples, is popular over the entire country; fruit bright yellow, striped with red. Excellent for jelly. Sept. to Oct.

Concord, N. H., April 29, 1922.

Gentlemen: The co-operative order for apple trees which was purchased by several farmers in this county of you, through the Farmers' Exchange proved very satisfactory. The trees came through in good condition, were of the size, and even larger than you guaranteed, and from all appearances are true to name. Everyone was very much pleased with them. Very truly yours,

R. W. PEASLEE, County Agricultural Agent.



MONTMORENCY

Cherry Trees

Wholesale Price of all Varieties of Hardy Upland Grown Cherry Trees

Budded on the Best French Imported Cherry Stock

SWEET AND SOUR CHERRY TREES

		Height	Caliper		Each	Ten	Hundred
Largest Size	2 Year	6 to 7 Feet	$\frac{3}{4}$ and up	XXX	.90	\$8.50	\$75.00
Medium Size	2 Year	5 to 6 Feet	$\frac{5}{8}$ to $\frac{3}{4}$	XX	.85	8.00	70.00
Smaller Size	2 Year	4 to 5 Feet	$\frac{1}{2}$ to $\frac{5}{8}$	X	.80	7.50	65.00
Largest Size	1 Year	30 In. and up	Sturdy Buds	XXX	.90	8.50	75.00

Fifty at hundred rate, providing not less than ten of any one variety.

PARCEL POST. First Class 3 ft. trees sent by parcel post, postage prepaid, for 70 cents each, \$6.50 per 10.

6% Discount on all Cash Orders received before October 15th. 3% after that date.

For the convenience of our customers, we have printed in heavy type the names of the best and most profitable varieties.

How to Plant—For your information cherry roots must not be given much sun or wind exposure—either are just as harmful as a heavy frost. You would not think of leaving them out over night uncovered. It is just exactly as necessary to protect them from the sun and wind.

Requires Least Attention of All Fruits, because it has been demonstrated beyond question of doubt that scale cannot live on cherry.

Where to Plant—On any kind of land, other than wet. They will thrive beautifully on a sandy or gravelly soil.

343 Broad St., Keyport, N. J., April 18, 1922.

Gentlemen: The stock you shipped on the 12th arrived here on the 14th in very good shape and was very satisfactory in every detail. Thanking you for such prompt delivery, I remain
Very truly yours,
PHILIP G. HYER.



Sour Cherries

Dyehouse. A hardy and valuable cherry. The earliest cherry of fine quality. Often bears at two years old, and has the appearance of being covered with a purple cloth, such is the abundance of the fruit. Has the smallest pit of any cherry known. For tarts, pies and especially for canning it has no superiors among cherries. Early June.

Early Richmond. This is one of the most valuable and popular cherries and is unsurpassed for cooking purposes. This hardy cherry fruits on young trees soon after planting. It is a good old variety that yields such marvelous crops in the gardens. The most hardy of all varieties, uninjured by the coldest winters. Tree slender in growth, with a roundish spreading head exceedingly productive. Fruit is medium size, round and dark red. The flesh tender, juicy, and sub-acid. Ripens in June.

English Morello. Without doubt one the most valuable of this class. Easily grown, generally producing a heavy crop. Fruit dark red, quality good, with a rich, acid flavor; late. Tree very hardy, for extremely cold latitudes. August.

May Duke. Large, red; juicy and rich; an old, excellent variety; vigorous, productive. June 15.

Montmorency. A beautiful, large, red cherry; much larger and firmer than Early Richmond, and fully ten days later in ripening. Being extraordinarily prolific and very hardy, it can be recommended as a variety of great value. valuable for canning and preserving. A patron writes that six years ago he planted fifty Montmorency cherry trees from which he has just harvested \$150 worth of fruit. One acre of Montmorency cherries, owned by a neighbor, has returned an average annuity of over \$600 for the last ten years. This cherry is in great favor wherever cherries are grown. With such a heavy demand for this variety, we would suggest that you order early. Last of June.

Olivet. A new Duke of French origin. Unlike most others of this class, it is said to be very early and to ripen over a long period. Fruit very large. June.

Ostheime. A hardy cherry from Russia. It has been tested in the severest winters of Minnesota, and has been found perfectly hardy. Fruit large. July 15th.

Wragg. Much like English Morello. More productive and excels in size, yield and quality. One of the hardiest Cherries and has produced annual crops at the northern-most limit of Cherry culture. August.

Sweet Cherries

Black Tartarian. This fine old variety produces immense crops of very large, purplish black fruits of mild, sweet, jelly-like consistency. The tree makes a beautiful, erect growth. Late June and early July.

Bing. This valuable new black cherry succeeds everywhere. Tree very thrifty and upright grower, very hardy and productive, flesh very solid, flavor of the highest quality, a fine shipping and market variety. It is one of the most delicious sweet cherries. This valuable cherry should be followed by Lambert, which is later in ripening. Both are grand cherries. July.

Governor Wood. One of the best cherries; very large, light yellow, marbled with red; juicy, rich and delicious; tree healthy and a great bearer; hangs well on the trees; vigorous. Last of June.

Lambert. A fine sweet variety originating in Oregon, and one of the largest of all Cherries, dark purple red, turning almost jet black when ripe. Flesh firm, rich, juicy, tree rugged, strong grower and an enormous bearer. The growing of the sweet cherry is a great industry only fairly well begun. A great shipping and market variety. Late July.

Napoleon. Tree medium size, erect with roundish head, fruit borne generally in twos, very large oblong cordate, light lemon yellow with red cheeks in the sun. Flesh very hard, brittle, colorless, reddish at the stone. Good, excellent bearer. Ripe about June 20th.

Schmidt's Biggarreau. The fruit is of very large size, of a deep mahogany color. The flesh is dark, tender, very juicy with a fine rich flavor. Fruit grows in clusters. It is an excellent shipper and brings good money on the market. July.

Windsor. A splendid, large, liver-colored Cherry that hangs a long time and rots but little. The flesh is remarkably firm and good, the tree very hardy and fruitful. Exceedingly valuable for late market and home use. July.

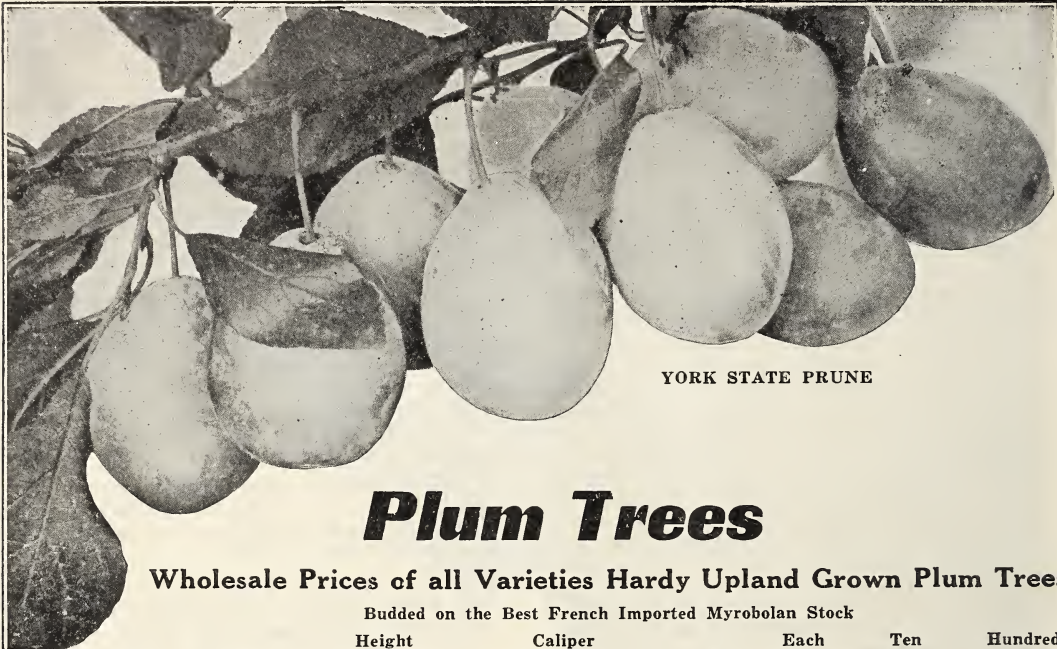
Yellow Spanish. Large, pale yellow, with red cheeks; firm, juicy and excellent, one of the best light-colored Cherries; vigorous and productive. Last of June.

Concord, N. H., April 13, 1922.

Gentlemen: I have received the 200 trees and am very much pleased with them as they are the best that I ever had.

Yours truly,

W. G. KENT.



YORK STATE PRUNE

Plum Trees

Wholesale Prices of all Varieties Hardy Upland Grown Plum Trees

Budded on the Best French Imported Myrobalan Stock

		Height	Caliper		Each	Ten	Hundred
Largest Size	2 Year	6 to 7 Feet	$\frac{3}{4}$ and up	XXX	.90	\$8.50	\$80.00
Medium Size	2 Year	5 to 6 Feet	$\frac{5}{8}$ to $\frac{3}{4}$	XX	.85	8.00	75.00
Smaller Size	2 Year	4 to 5 Feet	$\frac{1}{2}$ to $\frac{5}{8}$	X	.80	7.50	70.00
Largest Size	1 Year	3 $\frac{1}{2}$ Feet and up	Sturdy Buds	XXX	.90	8.50	80.00

Fifty at hundred rate, providing not less than ten of any one variety.

PARCEL POST. First Class small size 3 ft. trees sent by parcel post, postage prepaid, for 70 cents each, \$6.50 per 10.

6% Discount on all Cash Orders received before October 15th. 3% after that date.

Plums are hardy and grow vigorously in nearly all sections, succeeding on any soil that grows good corn or potatoes. Plum trees are planted about as far apart as peaches; that is, from 15 to 18 feet apart each way. Many growers prefer to plant them closer one way than the other, and eventually to stop cultivation in one direction. If this system is used they may be placed 18 to 20 feet apart one way, and from 10 to 12 feet the other way. The trees are pruned the same way that apple trees are, when planted.

Bradshaw. A very large and fine early plum, dark violet red, juicy and good. Very productive; valuable for market. The tree is very hardy and vigorous. Middle of August.

Lombard. It is a handsome reddish plum, the flesh yellow, juicy and pleasant. It is an excellent variety and can be relied on for a crop when other varieties fail. August.

Moore's Arctic. Fruit grown in clusters. Color dark blue or nearly black when fully ripe. Dr. Hoskins says this is the hardiest plum he has tested. September.

Maloney Prune. We are offering it this year at same prices as other varieties. Season extending from September 15th until freezing weather. Color dark blue; flesh yellow and delicious; freestone; heavy annual bearer. It certainly is a marvel—just what the orchard man has been looking for.

Niagara. Red, large size, makes an attractive appearance in market, and possesses good shipping qualities. It bears enormous crops of fruit. Tree is an upright grower, vigorous and healthy. Middle of August.

Reine Claude. (Bavay's Green Gage)—Roundish, oval, greenish, marked with red in the sun; a great favorite. September.

Felleberg Prune. A fine prune, oval; purple; flesh juicy and delicious; parts from the stone; fine for drying; tree very productive. Early September.

German Prune. Medium; oval; purple or blue; juicy, rich, fine. Tree vigorous and very productive. One of the best. Sells for higher prices in market on account of high quality. A leading favorite. There is no easier grown fruit that gives greater or more certain profit than the German Prune. Early September.

Grand Duke. One of the best late plums for market, as large as Bradshaw, of same color, entirely free from rot. Last of September.

Gueii. This is one of the newer varieties originating in New York state. The color is a dark purple. The flesh is firm, sub-acid and agreeable. Size large. September.

Imperial Gage. Rather large; oval; greenish; flesh juicy rich and delicious, parts from the stone. Tree a vigorous grower; very productive

DANVILLE'S PIONEER WHOLESALE NURSERIES

Shipper's Pride.

Large, nearly round; dark purple; quite juicy, sweet; splendid shipper and marketer; moderate grower; productive. Originated in north-western New York. September.

Shropshire Damson.

One of the favorite Damsons. Fruit oval; tree a good grower and enormously productive; fruit of medium size produced in thick clusters or groups, dark purple color, esteemed for preserving. October.

Thanksgiving Prune. Very productive, good quality and long keeper. It will keep for weeks and months after picking like an apple. It is extremely hardy, as a matter of fact, will succeed in any state east of the Rockies; absolute proof against severe winters. Mr. Maloney especially recommends this variety to you. October.



YORK STATE PRUNE, 1-3 of Natural Size

York State Prune.

One of the largest, best in quality and most productive of all prunes; large size, color dark blue, covered with purple black, delicious; originated in Dansville, N. Y.; a vigorous grower and hardy. Is being planted extensively and is considered the best for commercial purposes. Last of August.

Japan Plums (Continued.)

Climax. Tree extremely vigorous, upright, with strong branches and very large leaves. Productive as Burbank, about as large and usually two or three weeks earlier. July.

Red June. The great early market Plum. Medium to large; deep vermilion red, with beautiful bloom; very showy; flesh light lemon-yellow, firm, slightly sub-acid, delightful. It is the best in quality of any of the early Japanese plums, free from rot. Ripens in early Aug.

Wickson. This, largest of the Japan Plums is superb in every way. The color is bright cherry-red, covered with a light bloom; the pit is small for so large a fruit, the flesh is thick, sweet, tender and rather dry, indicating good keeping and shipping qualities. The fruit sells almost on sight. September.

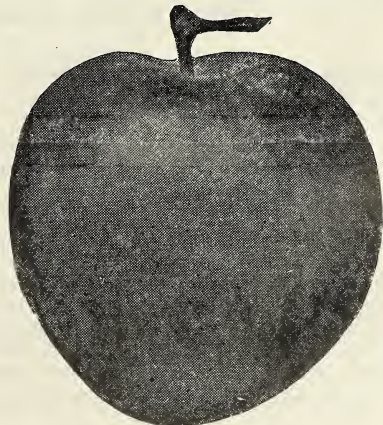


SHROPSHIRE DAMSON

Japan Plums

Abundance. One of the best Japan Plums. The tree a rapid grower, healthy, comes into bearing remarkably young and yields abundantly. Fruit of medium size, large when thinned; amber, with markings of red; juicy, sweet, of good quality when well ripened. May be picked when it begins to color; will keep a long time. August.

Burbank. Is decidedly the best of Japan varieties unsurpassed for beauty and productiveness, as well as a very hardy tree with foliage so perfect as to contribute in an essential degree to its health. One of the grand points about the Burbank is that it succeeds over a wide range of our country, and will stand the most severe winters. Fruit large, oval, with a reddish purple skin; flesh yellow, juicy and good. A good one. August.



ABUNDANCE



ELBERTA

Peach Trees

Wholesale Price of All Varieties of Peach Trees

		Height	Caliper		Each	Ten	Hundred
Largest Size	1 Year	5 to 6 Feet	9-16 and up	XXX	.75	\$7.00	\$37.50
Medium Size	1 Year	4 to 5 Feet	7-16 to 9-16	XX	.70	6.50	32.50
Smaller Size	1 Year	3 to 4 Feet	5-16 to 7-16	X	.65	6.00	27.50

Fifty at hundred rate providing not less than ten of any one variety.

PARCEL POST. First Class 2½ ft. small size trees sent by parcel post, postage prepaid for 55 cents each, \$5.00 per 10.

6% Discount on all Cash Orders received before October 15th. 3% after that date.

For the convenience of our customers, we have printed in heavy type the names of the best and most profitable varieties.

Peach Growing is Today a Great Industry. In all probability more peaches are being planted annually than any other fruit. The comparative ease with which Peach trees may be cultivated, their freedom from disease, the short period before they come into bearing, together with the wonderful demand for the fruit, and the facility with which it may be shipped to markets, make peach growing extremely profitable.

Soil. Peach trees will succeed on any kind of rich soil, but will not thrive on clay, nor damp, low land.

UPLAND GROWN STOCK BEST FOR PLANTING

DANSVILLE'S PIONEER WHOLESALE NURSERIES

Alexander. Medium, greenish white, nearly covered with rich red, melting, juicy, sweet. July 1st. Free.

Belle of Georgia. Very large white Peach with red cheek. The flesh is white, firm and of fine flavor. Tree rapid grower and very productive. July. Free.

Carman. Fruit large, color creamy white or pale yellow with deep blush; flesh tender, fine flavor and quite juicy; very hardy and productive every year. Aug. Free.

Crawford's Late. Fruit of large size; skin yellow, or greenish yellow, with dull red cheek; flesh yellow; tree vigorous, moderately productive. Last of Sept. Free.

Crawford's Early. A magnificent large, yellow peach, of good quality. Tree vigorous and very productive. Its fine size, beauty and productiveness make it one of the most popular sorts; no other variety has been so extensively planted. First of Sept. Free.

Champion. Fruit large, beautiful in appearance; flavor delicious, skin creamy white, with red cheek; valuable for commercial orchards, extreme hardiness and splendid quality make it a favorite. Late Aug. Free.

Chair's Choice. Has no superior in quality and flavor, and for profit is without a rival; large, yellow, free, rich in color, flesh very firm, ripens after Smock; great bearer. Oct. Free.

Elberta. The leader of all peaches and the greatest commercial variety on the market; 50 per cent of the peaches planted are Elberta. In all probability no peach will succeed over so wide a range of territory as this kind. It will thrive where any peach can be grown. A beautiful peach of good quality, not only the best orchard variety, but also valuable for planting in the garden. Elberta is hardier in bud than many varieties, therefore a more uniform cropper. It is large, yellow, with red cheek, juicy and high flavor; flesh yellow, free stone. Season medium early, following quick upon Early Crawford. Early Sept. Free.

Fitzgerald. It is one of the hardiest peaches, both in bloom and tree; very prolific, large size. First of Sept. Free.

Greensboro. A valuable variety; color greenish-white, shaded and splashed with dark red, very hardy and not so subject to rot as are most early varieties. Owing to extreme hardiness of both tree and bud we recommend it for sections where other varieties do not succeed. Late July. Free.

Hill's Chill. Fruit medium size, oblong; skin yellow, shaded with dark red; flesh yellow; very rich and sweet. First of Sept.

Hale (New Yellow) (Freestone). This notable new variety of peach is very large in size. In color it is a deep, golden yellow overlaid with bright carmine. The skin is thick, smooth and without fuzz. The flesh is deep yellow, fine grained with a very delicious flavor. Late Aug.

Kalamazoo. Large, golden yellow, with crimson cheek; flesh thick yellow, superb quality, small pit. Strong grower, early bearer, hardy and productive. First of Sept. Free.

Mountain Rose. Large, red, white flesh, juicy and excellent. Early August. Free.

Niagara. Tree hardy, healthy in leaf and bud and bears abundantly. Fruit large, oval, yellow with brilliant red cheek. Last of August.

Rochester. Yellow with a most attractive red blush; juicy and delicious and keeps well; an excellent shipper. Aug. 15. Freestone.

Salway. Large roundish ovate; yellow, with a crimson cheek; flesh deep yellow, red at the pit; sweet, juicy, good. Late. Valued as one of the best late peaches for market. October. Free.

Smock Free (Beers Smock.) Fruit large; oval; skin orange yellow, mottled with red; a good market sort. Last of September.

Yellow St. John. Of medium size, orange yellow with a red blush on sunny side; flesh tender, juicy and quality very good. Tree is a strong grower and bears heavy crops every season. Aug. 15th.



OUR PEACH TREES

5-6 ft.

4-5 ft.

3-4 ft.



BARTLETT

Pears

Prices of All Varieties of Hardy Upland Grown Standard Pear Trees

		Budded on Best French Imported Pear Stock		Each	Ten	Hundred
		Height	Caliper			
Largest Size	2 Year 6 to 7 Feet	$\frac{3}{4}$ and up	XXX	.85	\$8.00	\$75.00
Medium Size	2 Year 5 to 6 Feet	$\frac{5}{8}$ to $\frac{3}{4}$	XX	.80	7.50	70.00
Smaller Size	2 Year 4 to 5 Feet	$\frac{1}{2}$ to $\frac{5}{8}$	X	.75	7.00	65.00
Largest Size	1 Year 3 $\frac{1}{2}$ Feet and up	Sturdy Buds	XXX	.80	7.50	70.00

Fifty at hundred rate, providing not less than ten of any one variety.

PARCEL POST. First Class 3 ft. Pear Trees sent by parcel post, postage prepaid, for 65 cents each, \$6.00 per 10.
6% Discount on all Cash Orders received before October 15th. 3% after that date.

For the convenience of our customers, we have printed in heavy type the names of the best and most profitable varieties.

The Planting of Pears is on the increase, so much so that it has been difficult for us to supply the demand. This is especially true of Bartlett, Clapp's, Kieffer and Seckel which are the leaders and in the order as named.

Soil. Pears will succeed best in a clayey soil, although any good heavy soil will do, but avoid planting on sandy loam.

DANVILLE'S PIONEER WHOLESALE NURSERIES

Bartlett. Large, coloring when fully ripe to waxy yellow with red blush; juicy, melting, highly flavored, a most delicious fruit; tree bears early and abundantly. We have sold many large orchards of this variety. The fruit ripens just at a time when there is but little competition; in fact, there is no pear ripening at the same time that is in the Bartlett class. It might surprise you to know—nevertheless it is a fact—that there are more of this variety planted than all other kinds of pears combined. September.

Beurre D'Anjou. This is one of the best known, most popular and profitable late pears. The tree is a vigorous grower, hardy and prolific. The pears are of large size, green in color, but often yellowing when thoroughly ripe. They are very juicy and luscious and of the best quality. For late fall and very early winter use, we have no better variety. Oct. to Jan.

Beurre Clairgeau. Large; light yellow, shaded with crimson and russet. Flesh yellowish, melting. Free, early, abundant bearer. Nov. to Jan.

Beurre Bosc. A large and beautiful russet pear, very distinct with a long neck; melting or nearly so, high flavored and delicious; bears well. This pear is generally conceded to be a high quality pear. Early Oct.

Clapp's Favorite. This is without doubt the most productive Pear on the market. A superb large, long yellow Pear, richly flushed, with russet-red next the sun. The flesh is fine grained, juicy, melting and buttery. A cross between Bartlett and Flemish Beauty; earlier than Bartlett and resembling Flemish Beauty in growth. It is as hardy as the Flemish Beauty; a fine grower and extremely productive. Our trees of this variety are exceptionally fine, for they were grown on our new farm, situated at an elevation of 1500 feet, which insures you of receiving hardy, healthy and vigorous trees, from which you are bound to get the best possible results. Early August.

Duchess D'Angouleme. A most dependable cropper, often fruiting the first season after planting. Fruit large, frequently weighing a pound. A dull greenish yellow, spotted russet, flesh white, rich and good quality. An all-around profitable market pear. October and November.

Flemish Beauty. This fine old Pear is still one of the hardest and most generally successful over a wide range of country, producing good crops annually of large, handsome fruit that is exceptionally good in quality. Considered one of the hardiest and best for the northwest in which location it bears great crops of perfect fruit. Sept. and Oct.

Garber. One of the Japan Hybrids; larger than Kieffer; hardy, productive, early bearer; excellent for canning. Sept. and Oct.

Howell. Large, yellow, with red cheek; early bearer and productive. Sept. and Oct.

Kieffer. Large, rich golden yellow, sometimes tinted red on the sun-exposed side; fair quality, excellent for canning. It has become a profitable market variety on account of its good shipping and keeping qualities. To properly ripen should remain on the trees until leaves begin to fall, then gather carefully and allow to ripen in a cool dark cellar, or other place of even temperature. The fruit is of high color and great beauty and sells more readily than fruits of better quality. October to November.

Koonce. A very popular early variety. Fruit large, yellow, one-half nearly covered with red. Does not rot at the core. Tree vigorous, hardy and upright grower. Very productive and a good shipper. July.

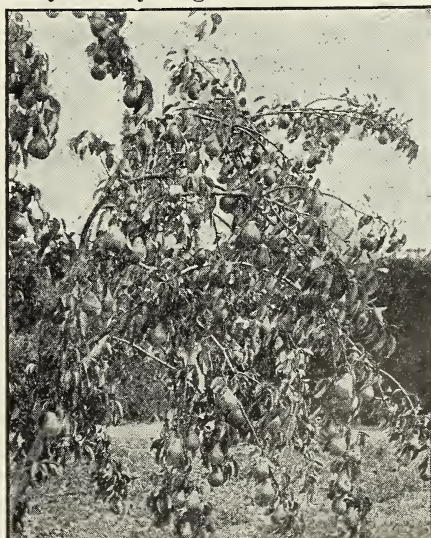
Lawrence. Medium to large, golden yellow, with melting, aromatic flesh. Unsurpassed as an early winter Pear. The tree is hardy, healthy and productive, bearing large crops annually. November and Dec.

Sheldon. A large, round, russet and red pear of very fine quality, melting, rich and delicious. Tree vigorous, erect and handsome, bears well and should be more largely planted. October.

Seckel. A beautiful and delicious little Pear that is the standard of excellence in its class. One of the richest and highest flavored Pears known. September and October.

Vermont Beauty. This is one of the newer varieties, but one which should not be overlooked when picking out the different kinds you want to set. The tree originated in Northern Vermont and is very hardy and thrifty. October and November.

Wilder. One of the very earliest pears, attractively colored and of excellent quality. The tree bears good crops early and annually. Early August.



FOUR YEAR OLD BARTLETT
An acre of Pears well cared for will net
\$300.00 a year

All orders of \$7.50 and up to \$35.00 will be delivered by Express prepaid. Those of \$35.00 and up will be delivered by Freight prepaid.

If Undecided About Planting, Read the Following Orchard Report By the Government

These figures were copied from a bulletin issued by the Department of Commerce, Bureau of Census, Washington, D. C., dated June 27, 1921.

APPLES:

Trees of bearing age—

1920	115,265,029
1910	151,322,840
Decrease	36,057,811
Per cent of decrease.....	23.8

Trees not of bearing age—

1920	36,171,604
1910	65,791,848
Decrease	29,620,244
Per cent of decrease.....	45.0

PEACH:

Trees of bearing age—

1920	65,654,921
1910	94,506,657
Decrease	28,851,736
Per cent of decrease.....	30.5

Trees not of bearing age—

1920	21,623,657
1910	42,266,243
Decrease	20,642,586
Per cent of decrease.....	48.8

The above table is inserted in our Catalogue for the benefit of our customers for we want you to be informed as to orchard conditions existing in the United States. When you realize that there are 65,000,000 less Apple trees and 49,000,000 less Peach trees in the orchards of the United States today than ten years ago, you will want to increase your planting.

An investment in fruit trees now is bound to prove extremely profitable. You will find our prices on Apple and Peach reduced about 50 per cent; in all probability as low as they will be anytime in the future.

It is only natural to assume when this report becomes generally known that there will be a big demand for Apple and Peach trees. You know there are only a certain number of these trees available for fall shipment. Unlike a manufactured production, it is impossible to produce additional stock until next Fall. Avoid disappointment and order your Apples and Peach trees now.



DANVILLE'S PIONEER WHOLESALE NURSERIES



Maloney Extra Large Garden Trees

Planting Instructions

Cut off about six inches of the limb growth, prune off bruised ends of roots, if any, make a smooth cut, dig hole deep enough so that the tree will be buried to the same depth as when standing in the nursery row, or up to the collar—soak roots in water one-half hour, place trees in hole, fill in one-fourth, tread well; another one-fourth, tread well; the third one-fourth, tread well; then finish filling and tread firmly so that when the tree is set it would require a strong man to pull it out.

For Your Back Yard

By this we mean trees which have been especially selected and scientifically treated and will come into fruiting early. We guarantee your success provided you follow the simple directions for planting on this page.

The value of these trees lies in the fact that they are what you might term "the cream of our nursery." We have cared for them until they have developed into just the kind of trees for your back-yard or small home orchard. They certainly are the trees that will pay you the best to plant.

A great many people make the very serious mistake of selecting small trees for their garden planting, when a few extra cents invested now will purchase trees which will fruit much earlier.

These trees are equipped with a beautiful root system which enables them to establish themselves quickly. Before planting be careful to have your soil loose and mellow.

Just read the planting directions on this page and see how easy it will be for you to set your EXTRA LARGE GARDEN TREES yourself.

MALONEY EXTRA LARGE 7-8 Ft FRUIT TREE COLLECTION

5 Trees, value \$5.75 for \$4.50

- 1 Red Astrachan Apple
- 1 Bartlett Pear
- 1 Elberta Peach
- 1 York State Prune
- 1 Montmorency (sour) Cherry

6% Discount on all Cash Orders received before October 15th. 3% after that date.

Wholesale Price of All Extra Large Garden Trees

	Height	Grade	Each	Ten
STANDARD APPLE	7-8 ft.	XXXX	\$1.15	\$10.00
VARIETIES: Baldwin, Ben Davis, Duchess, Maiden's Blush, McIntosh, N. W. Greening, Northern Spy, Pewaukee, Red Astrachan, R. I. Greening, Rome Beauty, Roxbury Russet, Stayman Winesap, Wagener, Wealthy, York Imp., Whitney Crab.				
STANDARD PEAR	7-8 ft.	XXXX	\$1.15	\$10.00
VARIETIES: B. D. Anjou, Bartlett, Clapp's Favorite, Duchess, Flemish Beauty, Seckel, Sheldon.				
SWEET CHERRY	7-8 ft.	XXXX	\$1.15	\$10.00
VARIETIES: Black Tartarian, Gov. Wood, Windsor.				
SOUR CHERRY	6-7 ft.	XXXX	\$1.15	\$10.00
VARIETIES: Early Richmond, Eng. Morello, Montmorency.				
PLUM	7-8 ft.	XXXX	\$1.15	\$10.00
VARIETIES: Bradshaw, German Prune, Lombard, Satsuma, Shipper's Pride, Shrop. Damson.				
PEACH	6-7 ft.	XXXX	\$1.15	\$10.00
VARIETIES: Elberta, Champion, Carman, Early Crawford, Belle of Georgia, Salway.				
DWARF PEAR	5-6 ft.	XXXX	\$1.15	\$10.00
VARIETIES: Clapp's Favorite, Duchess, Seckel.				
QUINCE	6-7 ft.	XXXX	\$1.15	\$10.00
VARIETIES: Orange, Champion.				

202 Riverside Drive, N. Y. City, July 24, 1921.

Gentlemen: I prefer your extra large fruit trees to any I have ever seen. In fact I had fruit on the trees that I planted this spring. That is the only size to plant. They may cost a little more than others, but they are certainly strong trees and well rooted.

Respectfully yours,

JOHN NEMETH.

Dwarf Fruit Trees



McINTOSH DWARF

Dwarf fruit trees bear larger, better fruit, bear several years earlier, and produce more returns for a given space than standard trees. This is all true and there are even more important points. The low, broad heads are within reach, so that apples or pears can be easily picked. You can plant dwarf trees in your garden and still grow strawberries and most vegetables. With dwarfs some varieties will bear the first year, all will the second and bear a full crop the fourth year.

Dwarf Apple trees are budded on Paradise or Doucin stock, and Dwarf Pear trees are budded on Quince stock. They will succeed in many places where standard trees fail. In a word, they are the kind of Dwarf trees that will put their strength into fruit instead of wood.

DWARF APPLE TREES

Wholesale Price of all Varieties of Dwarf Apple Trees

	Height	Caliper		Each	Ten
Largest Size	4 to 5 Feet	5/8 and up	XXX	.85	\$8.00

PARCEL POST. First class 2 1/2-3 foot Dwarf apple trees can be sent by parcel post, postage prepaid, for 75 cents each, \$7.00 per 10.

We have the following varieties. For description see pages 5-7.

Alexander	Bailey Sweet	Baldwin	Bismarck
Delicious	Duchess	Early Harvest	Fall Pippin
Fameuse	Grimes Golden	Gilliflower	Hubbardston
Jonathan	King	McIntosh	Maiden Blush
Northern Spy	Rambo	Rome Beauty	R. I. Greening
Red Astrachan	Spitzenburg	Summer Rambo	Sweet Bough
Stayman Winesap	Tolman Sweet	Twenty Ounce	Wealthy
Wagener	Winter Banana	Yellow Transparent	

DWARF PEAR TREES

Wholesale Price of all Varieties of Dwarf Pear Trees

	Height	Caliper		Each	Ten	Hundred
Largest Size	2 Year 4 to 5 Feet	5/8 and up	XXX	.75	\$7.00	\$60.00
Medium Size	2 Year 3 to 4 Feet	1/2 to 5/8	XX	.70	6.50	55.00

PARCEL POST. First class 2 1/2-3 foot Dwarf Pear trees can be sent by parcel post, postage prepaid, for 60 cents each, \$5.50 per 10.

We have the following varieties. For description see pages 14-15.

Anjou	Bartlett	Clapp's Favorite	Duchess
Flemish	Kieffer	Lawrence	Sheldon
Seckel	Vermont Beauty	Wilder Early	

6% Discount on all Cash Orders received before October 15th. 3% after that date.



DANVILLE'S PIONEER WHOLESALE NURSERIES



QUINCE TREES

Orange.

The best of the older varieties, still more extensively cultivated than any other. Everyone is acquainted with the Orange Quince, a good old variety that never disappoints the planter; good for home use and for market. Its large golden yellow fruit of fine quality is to be seen in more or less quantities in nearly every garden or orchard every season, as it rarely fails to produce a crop. Ripens in October.

Meech's Prolific.

Fruit is large, orange yellow, of great beauty and delightful fragrance. Tree a vigorous grower and immensely productive. Ripens between the Orange and Champion. Last of October.

Champion.

A large, late-ripening sort, that produces good and constant crops. One of the best for sections not subject to early frosts. Last of October.

Wholesale Prices of all Varieties of Quince Trees

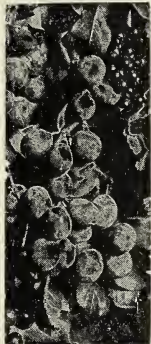
Largest Size, 2 year	4 to 5 Feet $\frac{3}{4}$ & up	XXX	.90	\$8.50	\$80.00
Medium Size, 2 year	3 to 4 Feet $\frac{1}{2}$ to $\frac{3}{4}$	XX	.85	8.00	75.00

Fifty at hundred rate providing not less than ten of any one variety.

PARCEL POST. First class 2 to 3 ft. Quince trees can be sent by parcel post, postage prepaid, for 75 cents each, \$7.00 per ten.

Everyone Wants the Best--Maloney Upland Trees Have No Equal

RUSSIAN APRICOTS



Beautiful and delicious fruit. In quality and appearance is between plum and peach, combining qualities of both. Ripening early, together with its delightful flavor makes it one of the most valuable fruits. Tree hardy as the peach. Requires about the same cultivation as the peach or plum. It ships well and commands a good price in any market. For drying and canning, it has no superior. The Russian varieties are quite distinct from the other European sorts; much hardier, earlier bearers and productive.

Alexander. Very hardy and immense bearer; fruit large; yellow, flecked with red; very beautiful, sweet and delicious. July.

Alexis. Very hardy and abundant bearer; yellow with red cheek; large to very large; slightly acid, rich and luscious. July.

Moorpark. One of the largest. Orange with red cheek; firm, juicy, with a rich flavor; very productive. August.

Price of all Varieties of Apricot Trees

Apricot	2 Year	Height 4 to 5 Feet	XXX	Each .90	Ten \$8.50
---------	--------	-----------------------	-----	-------------	---------------

NUT TREES

American Sweet Chestnut is adapted to a great portion of this country. It is valuable as a nut producing tree, timber and ornamental purposes. As high as \$14.00 per bushel has been paid for American Sweet Chestnuts when first brought into New York market. \$6.00 to \$10.00 per bushel is the common price. A well grown American Chestnut that has passed the quarter-century mark is a gracious delight to the eye of the lover of trees, and there is a peaceful, dignified impressiveness about a grove of old chestnut trees that is good to experience.

Wholesale Price of 4 to 5 ft. trees, \$1.00 each.

Chestnut, Spanish. A handsome, round-headed tree, producing abundantly, very large nuts that find a ready market at good prices.

Wholesale Price of Spanish Chestnut trees, 4 to 5 feet, \$1.00 each.

English Walnut. A fine, lofty, growing tree, with handsome, spreading head; produces large crops of thin-shelled, delicious nuts which are always in demand at good prices. They are fairly hardy and are fruiting here in the Genesee Valley.

Wholesale Price, 3 to 4 feet, \$1.50 each.

Black Walnut. The common well-known Black Walnut, the wood of which is most beautiful and valuable. It is very productive in nuts, which are liked by many.

Wholesale Price, 5 to 6 feet, 65 cents each.

Butternut. A fine native tree producing a large, longish nut, which is prized for its sweet, oily, nutritious kernel.

Wholesale Price, of Butternut trees, 4 to 5 feet, \$1.00 each.

6% Discount on all Cash Orders received before October 15th. 3% after that date.

Grapes

Wholesale Price of Grapes, 2 Year, Vigorous Vines, Except as Noted

	Each	Ten	Hundred
2 Year No. 1 Strong Vines	.35	\$3.00	\$25.00

PARCEL POST. Grapes can be sent by parcel post, postage prepaid, for 2 cents per vine extra.

6% Discount on all Cash Orders received before October 15th. 3% after that date.

Every city and country garden should have a dozen or more grape vines. They do admirably trained up the side of any building, or along the garden fences, occupying but little room and furnishing an abundance of the healthiest fruit. Plant about 8 feet apart, by the fence or building. For vineyards, make rows 8 feet apart, 6 to 10 feet in rows.

Brighton. Red. Bunch large, well formed; berries above medium to large, round; excellent flavor and quality; one of the earliest in ripening. One of the very best shippers. Vine hardy and vigorous grower.

Catawba. Dark red when fully ripe. Bunch large, berries medium to large, skin thick, tough; flesh somewhat pulpy, with rich vinous flavor, of best quality for both table and wine.



NIAGARA

Concord. Black. Early. Decidedly the most popular Grape in America and deservedly so. Bunch large, shouldered, compact; berries large, covered with a rich bloom, skin tender, but sufficiently firm to carry well to distant markets; flesh juicy, sweet, pulpy, tender; vine a strong grower, very hardy, healthy and productive. Most reliable and profitable for general cultivation. Wholesale price, 30 cents each, \$2.50 per 10, \$20.00 per 100.

Campbell's Early Black. Strong grower, with large, healthy foliage, productive; its keeping and shipping qualities are equalled by no other early grape. Ripens with Moore's Early. Bunch and berry large, glossy black with blue bloom, sweet and juicy, seeds few and small, part readily from the pulp. Stands at the head of early black grapes for quality.

Delaware. Red. Bunches small, compact, shouldered; berries rather small, round, skin thin, light red; flesh very juicy, sweet, spicy and delicious.

McKinley Early (New White). Strong grower; bunches large, compact and handsome, berries large and oval like Malaga Grapes; green at first, turning to yellow when fully ripe; very sweet. Extra quality; a good shipper; remarkable keeper; will hang on vines sound and perfect for weeks after ripe. Ten days earlier than Niagara with the richest flavor of any Grape on the market.

Moore's Early Black. Bunch large, berry large round with heavy bloom vine exceedingly hardy. Its earliness makes it desirable for an early market. Its hardiness particularly adapts it to Canada and northern portions of the United States; succeeds admirably in the south.

Niagara White. Occupies the same position among the white varieties as Concord among the black; the leading profitable market sort. Bunch and berries large, greenish white changing to pale yellow when fully ripe. Skin thin but tough; quality much like Concord.

Worden. Black. Bunch large, sometimes shouldered, compact; berries very large, skin thin.

Grape Vines at a Bargain

10 Strong, 2 Year Vines for \$2.50

- | | |
|----------------------|------------|
| 1 Delaware | 3 Niagara |
| 3 Concord | 2 Brighton |
| 1 Moores Early Black | |



DANVILLE'S PIONEER WHOLESALE NURSERIES



Currants

Wholesale Price of all Varieties of Currant Bushes

	Each	Ten	Hundred
2 Year No. 1 Strong Bushes	.35	\$3.00	\$25.00

PARCEL POST. Currants can be sent by parcel post, postage prepaid, for two cents per bush extra.

6% Discount on all Cash Orders received before October 15th. 3% after that date.

232 Main St., Weatherly, Pa.

April 11, 1922.

Gentlemen: I received the trees you sent me April 7th in good condition and am well pleased with them.

Yours truly,

FRANK WETZEL.

great productiveness, high quality and remaining good so long after ripening, we recommend this as one of the best red currants, both for table and market.

Cherry. Bush vigorous, stocky and compact; cluster rather short, with short stems; fruit averages large; color fine, bright red; berry thin skinned, juicy and fine flavored. One of the most productive of the large Currants.

Diploma. Large, solid and of good quality, very attractive appearance, both clusters and berries being very large. Vigorous grower and the most productive red currant.

Fay. (Fay's Prolific.) Bush vigorous but not quite so strong a grower as Cherry; cluster medium to long, with rather long stems; color darker; and berry averages large; juicy and less acid than Cherry. An excellent commercial variety.

Perfection. In color it is a beautiful bright red, a size larger than the Fay; clusters average longer and the size of berries are maintained to the end of the bunch. It is one of the most productive Currants we have ever known.

Red Cross. A strong growing variety. Cluster long; berry medium to large bright red; quality good to best. It is exceedingly productive, and the currants are of large size. Further than this, the fruit is far sweeter than ordinary currants.

White Grape. Bush vigorous, somewhat spreading, productive; clusters long; berries large to very large, averaging large; of very attractive color, mild flavor and good quality. A good table variety.

Wilder. (President Wilder.) Bush upright, vigorous; clusters above medium length; berries large to very large, averaging large; bright red; excellent, with a mild sub-acid flavor. Ripens early and remains bright and firm until very late. Because of its exceedingly vigorous growth,



WILDER

States Into Which Currants and Gooseberries Can Be Shipped

Connecticut	New Jersey
Illinois (by permit)	New York
Indiana	Ohio
Massachusetts (by permit)	Pennsylvania
Michigan	

Bargains in Currants.

10 Bushes 2 yr. old \$2.75

3 Wilder	3 Red Cross
1. Perfection	3 Cherry

Red Raspberries



CUTHBERT

Wholesale Price of 2 Year Strong Plants, Best Selected Varieties

\$1.50 per 25 \$5.00 per 100 \$25.00 per 1000

Cuthbert.

This is a valuable variety well tested throughout the country. It has given good results both for home use and market. Cuthbert is a good vigorous grower and possesses vitality necessary for a popular variety. It yields bountifully of large and beautiful bright red berries, which are easily picked and always command good prices. No fruit grower can afford to omit planting Cuthbert.

St. Regis.

(Everbearing). A new acquisition to the Red Raspberry family. Fruit commences to ripen with the earliest and continues on young canes until October. Color bright crimson. Large size. Flesh firm and meaty. Good shipper.

Blackberries

Wholesale Price of 2 Year Strong Plants, Best Selected Varieties

\$2.00 per 25 \$6.50 per 100 \$45.00 per 1000

6% Discount on all Cash Orders received before October 15th. 3% after that date.

Eldorado.

The vines are very hardy and vigorous, and their yield is enormous. The berries are large, jet black, borne in large clusters and ripen well to-

gether; they are very sweet, melting, have no hard core and keep for eight or ten days after picking with quality unimpaired.

Mersereau.

Remarkably strong grower, upright, producing stout, stocky canes. An enormous producer of extra size berries, which are brilliant black and retain color; extra quality; sweet, rich and melting, without core. Ripens very early.

Minniewaska.

This wonderful, hardy, productive, good blackberry has not been forgotten by us, or our old patrons. Its principal points are hardiness, excellent quality, earliness, and continued bearing and productiveness.

Snyder. Extremely hardy, enormously productive; medium size, no hard, sour core; sweet and juicy. Ripens early.

Blowers.

Claimed to be the hardiest, most productive, of finest quality and to bring the highest market price.

PARCEL POST. Raspberries and Blackberries can be sent by parcel post, postage prepaid, for two cents per bush extra.



**DANVILLE'S PIONEER
WHOLESALE NURSERIES**

Black Raspberries

Wholesale Price of 2 year Strong Plants Best Selected Varieties

25 for \$1.50

100 for \$5.00

1000 for \$25.00

PARCEL POST. Raspberries can be sent by parcel post, postage prepaid, for 2 cents per bush extra. 6% discount on all cash orders received before October 15th. 3% after that date.

Cumberland New Black. This new berry is a very valuable acquisition. With its greatly superior size it combines the equally valuable characteristics of great firmness, splendid quality and wonderful productiveness. Fruit very large, firm. Mid-season.

Gregg Black. Of good size; fine quality, very productive and hardy. It takes the same position among black caps as Cuthbert among the red sorts.

Kansas Black. This variety is a strong, vigorous grower, standing extremes of drought and cold, and bearing immense crops. Early.

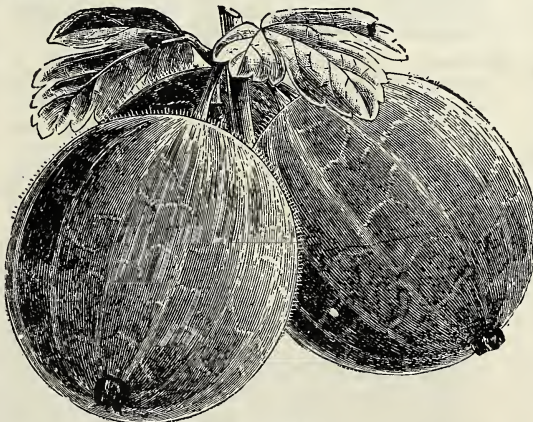
Plum Farmer Black. This very large and productive black raspberry is a great favorite for market or home use. It ripens very early and quickly. The fruit is enormously large.

Columbian Purple. A strong grower, unexcelled for productiveness and desirable for canning. Fruit very large, purplish color, rather soft; rich, sprightly flavor.



GOOSEBERRIES

Price for all varieties of Gooseberries named below, strong 2 year bushes, 45 cents each, 10 for \$4.00, 100 for \$35.00.



RED JACKET

Downing. Is the largest and best of all native American varieties. The value of Downing lies in its large size, fine quality, beautiful appearance, vigorous growth, and freedom from mildew.

Red Jacket. An American seedling of large size, smooth, prolific and hardy, of best quality. Has been well tested over a wide extent of territory by the side of all the leading varieties, and so far the most free from mildew, both in leaf and fruit, of them all. A wonderful cropper.

GARDEN ROOTS

PARCEL POST. Garden Roots can be sent by parcel post, postage prepaid, for one cent each extra.

Rhubarb or Pie Plant

Linnæus. Large, early, tender and fine. The very best of all.

15 cents each, \$1.25 per 10, \$10.00 per 100.

Asparagus

\$1.00 for 25, \$2.50 per 100, \$13.50 per 1000.

Palmetto. A very early variety, even, regular size and of excellent quality. It has been tested both north and south and has proven entirely satisfactory.

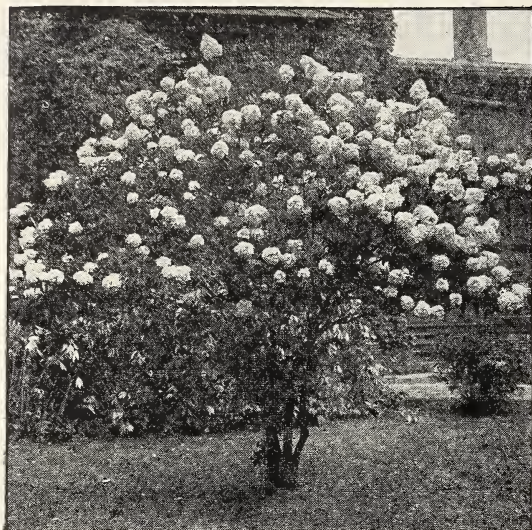
Conover's Colossal. Very large, makes rapid growth; planted mostly by market-gardeners; very productive.

Sage, Holt's Mammoth. Plants of strong growth. Leaves large, borne well above the ground. Of strong flavor and superior quality.

Price of strong 2 year roots, 25 cents each, 10 for \$2.00.

Horse Radish. Will stand a great deal of hardship and exist in soil year after year. Plant in deep, rich, cool soil. The yield will vary according to the soil and treatment. As high as ten tons have been secured from an acre.

Price: Strong Sets, 60c per 10, \$5.00 per 100.



HYDRANGEA PANICULATA



DEUTZIA, PRIDE OF ROCHESTER

Hardy Flowering Shrubs

Wholesale Price	Large Size	2½ to 3 Feet	2 Year	Each	Ten
PARCEL POST. Shrubs can be sent by parcel post, postage prepaid, for 3 cents per bush extra.					
6% Discount on all Cash Orders received before October 15th. 3% after that date.					
				.50	\$4.50

Shrubs are useful in bringing out the full beauty of a house. Splendid effects can be had by planting an assortment of flowering shrubs on the lawn, not at all difficult to arrange them for a group planted promiscuously here and there, has a splendid effect.

Maloney shrubs are hardy, upland grown at an elevation of 1500 feet; varieties listed are the hardiest, most beautiful and lasting, thrive everywhere and need little care or attention when once established. Year after year they grow larger and more beautiful.

Some shrubbery needs more pruning than others. They should all be trimmed enough to keep them shapely.

Hydrangea should be cut back every spring one-half of the last year's growth. The altheas can be pruned to suit your own fancy.

Nearly all shrubbery grows gracefully, but sometimes a slight pruning will be necessary to make them shapely. The Gold-leaf Syringa, like some other shrubs, can be pruned to any shape desired, like the evergreens.

Althea. A large shrub, sometimes trimmed into tree form, that blooms freely in August or September, when almost every tree is out of bloom. Vigorous grower and succeeds everywhere. Also called Rose of Sharon. We can furnish double varieties in these colors: Althea Double Purple, Red, Pink and White.

Butterfly Bush. Seems to attract butterflies in large numbers. It produces long,

graceful stems which terminate in tapering panicles of beautiful lilac-colored flowers that are of miniature size and borne by the hundreds on a flower head which is often ten inches long. It blossoms from early summer till frost; splendid for cutting.

Barberry Thumbergii. A pretty plant of dwarf habit from Japan. Very graceful and its foliage turns to a beautiful red in the fall. All Barberries make very fine hedges.

Calycanthus. (Sweet-scented shrub.) The wood is fragrant; foliage rich; flowers are of chocolate color, having a peculiarly agreeable odor.

Deutzia, Gracilis. Pure white flowers in June. Two feet high when fully grown.

Deutzia, Crenata, Double-Flowering. A hardy, vigorous shrub that does not suffer from insects or diseases and early in the season is fairly covered with very showy double white flowers that on the edge are slightly tinged with rose. Handsome, desirable shrub.

Deutzia, Lemoinei. Dwarf, the flowers are large pure white and produce freely.

Deutzia, Pride of Rochester. Blooms in May. Double, white, tinted with rose on the edge.

Fringe Purple or Smoke Tree. A very elegant and ornamental large shrub, with curious, hair-like flowers of a pinkish brown color which sometimes literally cover the tree and remain all summer.

Shrubs (Continued)

Fringe White. A popular and much admired shrub of moderate growth, and rounded form, with large, dark green, glossy leaves, and long drooping panicles of beautiful white fringe-like flowers.

Forsythia Fortunei (Golden Bells.) Deep yellow flowers in great profusion in April.

Golden-Leaved Elder. The best of all the colored shrubs. A plant of this bush in a bed, or a border, or on the lawn, is a conspicuous feature, the foliage being as yellow as gold.

Hydrangea Paniculata Grandiflora. Absolutely hardy; thrives in all soils; grows rapidly and blossoms profusely. The flowers are pure white, afterward changing to pink, and are borne in large pyramidal trusses often more than a foot long and six to eight inches in diameter. Begins to bloom early in August, and continues to bloom for several weeks. Wherever known it is considered to be one of the finest flowering shrubs.

Hydrangea, Arborescens Grandiflora Alba (Hills of Snow)—This hardy American shrub is the very finest addition to this class of plants. The blooms are of the very largest size, of pure snow-white color, and the foliage is finely finished.

Lilac, Purple. An old favorite; purple flowers.

Lilac, White. A well known favorite.

Mock Orange. Flowers white, deliciously perfumed. Derives its name owing to flowers resembling orange blossoms; a delightful substitute for that noble flower.

Perennial Phlox. Hardy and succeeds in any climate. Can be planted in large groups on the lawn or in a row along the border of the roadway. Red, pink, or white.

Quince, Japan. Dark green foliage, and showy deep, scarlet flowers of good size.



GOLDEN LEAVED ELDER IN BLOOM

Spiraea, Billardi. A hardy, free growing shrub. During July every branch and twig is tipped with a spike of beautiful blood-red flowers 4 to 6 inches in length. A distinctive and beautiful flower and shrub.

Spiraea Callosa Rosea. Has large panicles of deep rosy blossoms; grows freely and blooms nearly all summer; fine.

Spiraea Douglasi. Has spikes of beautiful, deep rose-colored flowers in July and Aug.

Spiraea Van Houttei. This is undoubtedly the best of the spiraeas. The cut shown is a fair one and shows it in full blossom. The blossoms are white. Do not pass it by.

Syringa, Common. Large, white flowers; very hardy.

Syringa, Golden. Large, deep yellow flowers; bush hardy



THE BUSH HYDRANGEA (Paniculata Grandiflora)

Maloney's Flowering Shrub

Collection No. 17

FOR THE HOME GROUNDS

6 Shrubs worth \$3.00 for \$2.50

- 1 Barberry Thumbergii
- 1 Deutzia, Pride of Rochester
- 1 Butterfly Bush
- 1 Spiraea Van Houttei
- 1 Deutzia Crenata
- 1 Weigelia Rosea

Tottenville, S. I., N. Y., April 22, 1922.

Gentlemen: Received the shrubs and trees in fine condition on the 17th of April. Thanks.

Yours truly,

J. H. HAMMANN.

SHRUBS—Continued



SNOWBALL COMMON



WEIGELA ROSEA

Snowball, Common.

A popular shrub. Makes a large bush. Bears balls of pure white flowers in June.

Snowball, Japan.

Erect, compact, growing 6 to 8 feet, with purple tinted corrugated foliage; a solid mass of white in June.

Upright Honey suckle

(pink.) Pink flowers which contrast beautifully with the foliage.

Weigela, Candida.

The flowers are of the purest white, blooming in June, and all summer. Hardy.

Weigela Eva Rathke.

Showy, bright red flowers borne freely during the summer.



A Bush of Spiraea Van Houttei in Full Bloom

Weigela, Floribunda.

The flowers are dark crimson, with white stamens somewhat like Fuchsia flowers. It blooms in the spring and in the fall.

Weigela Rosea. This is one of the most charming shrubs in cultivation; it cannot be too highly recommended; the flowers are large and of deep rosy color, and are borne in great profusion.

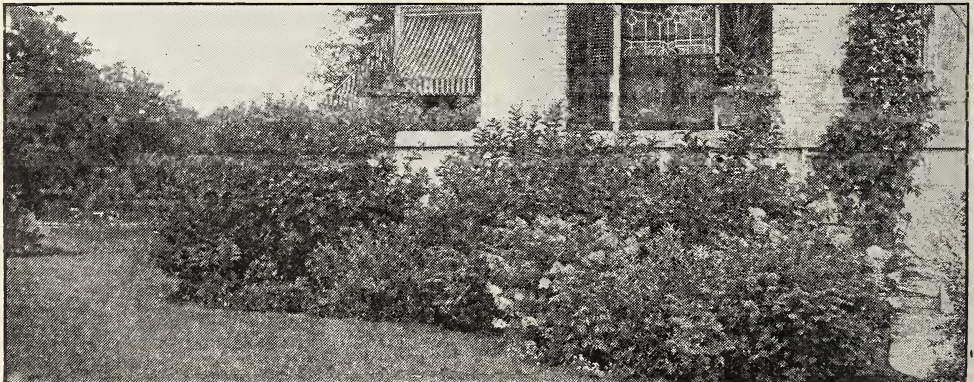
Hydrangea Tree Form

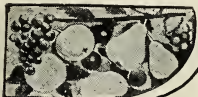
Same as Hydrangea P. G. except in tree form, being grafted on a Hydrangea stalk about 3 ft. high. When in full bloom are very attractive. **\$1.00 each.**

Our Shrub Collection No. 15 for \$8.50

(See Illustration Below)

- | | |
|----------------------|-----------------------|
| 3 Spiraea VanHouttei | 3 Butterfly Bush |
| 3 Deutzia Crenata | 3 Barberry Thumbergii |
| 3 Spiraea Billardi | 5 Common Snowball |





DANVILLE'S PIONEER WHOLESALE NURSERIES



Hedge Plants

Amor River Privet (North.) The best for hedge in the North. Has stood twenty degrees below zero, upright growth, foliage similar in appearance to California Privet. Strong Plants, 18-24 in., \$1.75 per 10, \$15.00 per 100. Strong Plants, 2-3 feet, \$2.00 per 10, \$17.50 per 100.

California Privet. A vigorous growing variety, of fine habit, thick, glossy, nearly evergreen leaves. Of all ornamental hedge plants this is the most highly prized. If cut to the ground one or two years after planting, it makes a very thick hedge right from the bottom, sending up many strong shoots. The leaves are a rich green, and will remain on the plants up to Christmas, and if they are a little sheltered they will keep green almost all winter. Should be planted about eight to ten inches apart to give best results.

Strong plants, well branched, 18 to 24 inches, 15 cents each, \$1.25 per 10, \$7.00 per 100, \$65.00 per 1000.

Strong plants, well branched, 2 to 3 feet, 20 cents each, \$1.50 per 10, \$8.00 per 100, \$75.00 per 1,000.

Barberry Thumbergii. A pretty plant of dwarf habit from Japan. Very graceful and its foliage turns to a beautiful red in the fall. All Barberries make very fine hedges.

Strong plants, 2 to 3 feet, well branched, 50c each, \$4.50 per 10, \$40.00 per 100.

Norway Spruce. There is no evergreen so largely planted as the Norway Spruce. It is indeed a tree possessed with great beauty at all seasons of the year, but particularly in winter when its branches are weighed down with newly fallen snow. This spruce is a rapid grower and is often used as a lawn fence between village or city lots. For Hedge purposes Norway Spruce should be planted in single rows 2 feet apart.



NORWAY SPRUCE

Wholesale price, 2 to 3 foot trees, \$1.00 each, \$9.00 per 10, \$85.00 per 100, balled and burlapped.

Evergreens

All Evergreens Balled and Burlapped

American Arbor Vitæ. A beautiful native tree much used for hedges, screens, singly on lawns and in tubs for porches.

Wholesale price, 2 to 3 ft., \$1.00 each, \$9.00 per 10.

Colorado Blue Spruce. Foliage is blue and sage—that distinctive color which is so rare in the east. Its silver foliage glistening in the sunlight, makes it surpass in beauty any other evergreen.

Wholesale price, 2 to 3 feet, \$3.00 each.

Irish Juniper. Junipers are handsome evergreens, always neat and clean. This var-

ety grows exceptionally slim and common-like. A general favorite for cemeteries and other planting.

Wholesale price, 2-3 ft., \$1.25 each., \$10.00 per 10.

Norway Spruce. There is no evergreen so largely planted as the Norway Spruce. It is indeed a tree possessed with great beauty at all seasons of the year. Norway Spruce can be planted most effectively in groups on the lawn, imitating nature, planting without any particular order.

Wholesale price, 2 to 3 feet thrifty trees, \$1.00 each, \$9.00 per 10, \$85.00 per 100.

Hardy Climbing Vines

Ampelopsis Veitchi (Boston Ivy.) This is one of the finest climbers we have for covering walls, as it clings firmly to the smoothest surface, covering it closely with overlapping foliage, giving it the appearance of being shingled with green leaves.

Wholesale price of strong 2 year plants, 65 cents each.

Clematis Henryii. A vigorous grower and a free bloomer, producing its large pure white flowers constantly during the summer and early autumn. The best large flowered variety.

Wholesale price of strong 2 year plants 75 cents each.

Clematis Jackmanni. The flowers are large, intense, rich, velvety violet-purple, and are produced in such masses as to form a cloud of bloom. This is the best known Clematis, and should have credit of the great popularity now attending this family of beautiful climbers.

Wholesale price of strong 2 year plants 75 cents each.

Clematis Paniculata (Sweet-scented Japan

Clematis.) Of very rapid growth, quickly covering trellises and arbors with handsome, clean, glossy foliage. The flowers are of medium size, fragrant, pure white, borne in immense sheets in September, when very few other vines are in bloom.

Wholesale price of strong 2 year plants, 65 cents each.

Dutchman's Pipe. Brownish flowers, resembling a miniature pipe; splendid for archways or verandas.

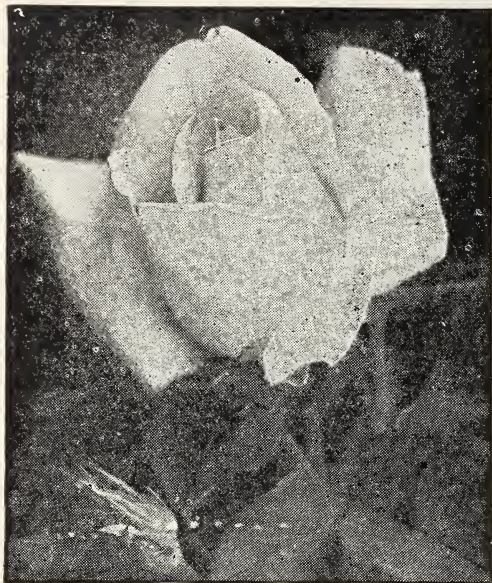
Wholesale price of strong 2 year plants, \$1.00 each.

Halleana (Hall's Japan Honeysuckle.) An almost evergreen honeysuckle of the greatest value, being hardy and of strong growth. The flowers are fragrant, of a pure white, changing to yellow.

Wholesale price of strong 2 year plants, 65 cents each.

Wistaria, Chinese Purple. A most beautiful climber of rapid growth and producing long pendulous clusters of pale blue flowers.

Wholesale price of strong 2 year plants, \$1.00 each.



FRAU KARL DRUSCHKI, white



KILLARNEY PINK

Roses

Wholesale Price of all Varieties of Rose Bushes

	Each	Ten
Strong Bushes 2 Year No. 1	.75	\$7.00

PARCEL POST. Roses can be sent by parcel post, postage prepaid, for 3 cents per bush extra.

6% Discount on all Cash Orders received before October 15th. 3% after that date.

Anne de Diesbach. Carmine, a beautiful shade; very large. A superior garden sort; fragrant; one of the hardiest.

Blanche Robert. Pure white, large and full, buds very beautiful. A strong grower and a desirable variety.

Bessie Brown. New. Very large, shell-shaped petals of creamy white, faintly flushed with pink, make up into flowers of rare beauty.

Baby Rambler. A dwarf (bush.) Just the thing for beds and borders and for edging walks. They are bound to take the place of geraniums and other plants which have to be removed each year. You can have them in Crimson and white.

Baron de Bonstetten. Flowers large and very double; color rich, dark red, passing to deep velvety maroon. Very fragrant.

Coquette des Alps. White, shaded with carmine; strong grower and a great favorite. This variety is very valuable; it continues to give a profusion of blossoms for weeks after general varieties have finished.

Clio. New. The perfection in Hybrid Perpetuals. Of delicate satin blush with a little deeper center. Large, well shaped and very double. Strong, robust, hardy and prolific. A jewel.

Frau Karl Druschki. Snow Queen. The finest white Hybrid Perpetual Rose, with large, full flowers of splendid form. It is marvelous in its beauty in half opened bud and in the pure white of the full opened bloom. It is the ideal rose for cemetery planting both North and South. It holds its foliage well and is healthy and vigorous and in hardiness it equals any of the Hybrid Perpetuals.

Rose Collection No. 29

1 Frau Karl Druschki 1 La France
1 General Jacqueminot

3 Strong Bushes, 2 Year, No. 1 worth
\$2.25 for \$2.00.

Lititz, Pa., April 12, 1922.

Gentlemen: I received my order of trees and vines from you to-day and am well pleased with them.

Yours respectfully,

F. F. RENTZ.

**Maloney Hardy Roses Grown at an Elevation of 1500 Feet
Are Incomparable**

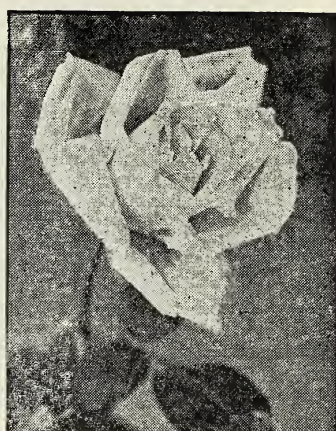
Roses (Continued)



MAGNA CHARTA (pink)



PAUL NEYRON (red)



BLANCHE ROBERTS (white)

General Jacqueminot. Brilliant crimson; large and fine. Beautiful in bud and a universal favorite.

Hugh Dickson. Intense crimson, shaded scarlet; very large, full and magnificent form, with high pointed center; growth upright and vigorous, free and continuous blooming; the finest of all autumn roses, highly perfumed.

Killarney. One of the most popular of our garden roses. It is perfectly hardy, a robust grower; color sparkling, brilliant, imperial pink.

La France. Rich satiny peach, changing to deep rose; large and full. A constant bloomer. The sweetest of all.

Magna Charta. Pink and carmine; very large and full; a profuse bloomer. Fragrant. Free grower.

Marshall P. Wilder. Bright cherry carmine; very fragrant and one of the freest bloomers; vigorous.

Mad. Caroline Testout. One of the most popular of the Hybrid Teas for the garden. This is the Rose which has made Portland, Oregon, famous. The flowers are extra large, and of a brilliant shining pink.

Mad. Plantier. Pure white, large and very double. A free bloomer and grower.

Mrs. Laing. Very free flowering; commences early and continues to bloom profusely until fall. Of delicate pink color. Very fragrant.

Margaret Dickson. New, perfectly hardy and very vigorous. A free summer and autumn bloomer. Flowers white with pale flesh center, of a waxy texture and delightful fragrance.

Perle des Jardines. A rich shade of yellow, fragrant—one of the best yellow roses, bush exceptionally hardy.

Prince Camille de Rohan. Very dark velvety crimson, changing to intense maroon.

Paul Neyron. The largest of all. Deep rose color. A free bloomer and vigorous grower.



MARGARET DICKSON (white)

Climbing Roses

Wholesale price, 2 yr. No. 1 Bushes 65c each, \$6.00 per 10.

Crimson Rambler. New. Of Japan origin. Very vigorous, growing eight to ten feet a season after it is well established. Entirely hardy and extremely prolific. It blooms in clusters. Of a beautiful crimson color and lasts a long time. It is a jewel.

Baltimore Belle. Pale blush, nearly white. Bloom in clusters.

Dorothy Perkins. A most beautiful shell-pink rambler. In hardiness, nothing more could be desired. Flowers are very double, of large size, usually two inches across and borne in loose clusters.



TEA'S WEEPING MULBERRY



AMERICAN ELM

Ornamental Trees

6% discount on all cash orders received before October 15th. 3% after that date.

NO home grounds are really complete without some shade and ornamental trees. The shade of Maples and the dark covers under Evergreens are never forgotten by people who in childhood played and lived under the trees. A comparison of a home without shade trees about it, to one with, is the best argument we can advance.

NOTHING will add more value to your property than ornamental trees, plants, shrubs and vines. If you want to sell your home or estate you will find that these improvements will add immensely to its value and beauty. We offer a large variety of ornamental trees, plants and shrubs to choose from. They are all healthy and vigorous growers.

American Elm. A natural spreading and drooping tree of our own American meadows and forests. It is very attractive in any suitable location, is entirely hardy and easily transplanted. There are more Elm trees planted along our streets and highways than any other variety. This is on account of its dense green foliage, which spreads out from overhead, covering a suitable space of ground in proportion to the size of the tree, which makes it the finest shade tree in the world. **Wholesale** Wholesale price, 10 to 12 ft., \$1.60 each, 10 for \$14.00; 8 to 10 ft., \$1.25 each, 10 for \$10.00.


Holley, N. Y., April 7, 1922.

Gentlemen:—The 845 Peach, Apple, Cherry, Pear and Plum arrived yesterday in fine condition. I am thinking of setting out more trees next year at which time you will hear from me.

Thanking you for your square dealings, I remain,
 Yours as ever,

JOHN F. PIEDEMONTE.

Maloney's Prepay Transportation Charges



We prepay transportation charges on all cash orders of \$7.50 or more received during the entire Fall season of 1922 to all points in the following states: Connecticut, Delaware, Illinois, Indiana, Maine, Maryland, Massachusetts, Michigan, New Hampshire, New Jersey, New York, Ohio, Pennsylvania, Rhode Island, Vermont, Virginia, West Virginia.

All orders of \$7.50 and up to \$35.00 will be delivered by Express, prepaid. Those of \$35.00 and up will be delivered by Freight, prepaid.

The Prices quoted in this Catalogue are for the Actual Cost of the Trees Delivered

ORNAMENTAL TREES—Continued



LARGE FLOWERING CATALPA SPECIOSA

Beech, Purple Leaf. The blood-leaved tree possesses all the qualifications of an ordinary beech and, in addition has beautiful red leaves. Will retain its foliage during the winter and will add greatly to the appearance of your lawn.

Wholesale Price of Purple Beech trees, 3 to 4 feet high, \$2.00 each.



CATALPA, BUNGEI

Catalpa Bungei. (Umbrella Catalpa.) Grafted on stems 6 to 8 feet high, it makes an umbrella shaped top without pruning. Perfectly hardy, and flourishes in almost all soils and climates. Leaves large, glossy, heart-shaped. A very desirable ornamental.

Wholesale Price of Trees, 6 to 8 feet, \$2.50 each.

Catalpa Speciosa. One of the most rapid growers. Valuable for timber, fence posts, railroad ties, etc., possesses wonderful durability. Large, heart-shaped, downy leaves, and compound panicles of white flowers.

Wholesale Price for first class trees, 6 to 8 feet, 75 cents each, 10 for \$7.00.

Cut-Leaved Weeping Birch. This noble tree is not only the most popular of the weeping trees, but it is decidedly the best. Its tall, slender, yet vigorous growth, graceful branches, silvery white bark and delicately cut foliage, present a combination of attractive characteristics rarely met with in a single tree.

Wholesale Price of Cut-Leaved Weeping Birch, 6 to 8 feet trees, \$2.00 each.

Horse Chestnut, White Flowering. The well-known European species; very handsome; has magnificent spikes of white flowers. As a lawn tree or for the street it has no superior.

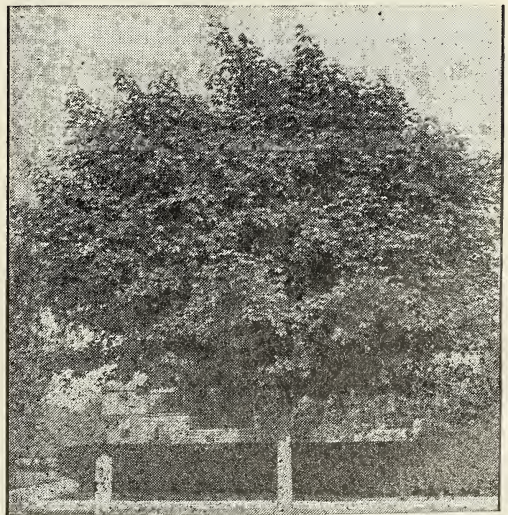
Wholesale Price, 6 to 8 feet, \$1.50 each.

Maple, Ash-Leaved. (Box Elder.) A fine, rapid-growing variety, with handsome, light green foliage and spreading head; very hardy; desirable for street planting and succeeds in many sections where other varieties do not thrive.

Wholesale Price, 8 to 10 feet, \$1.25 each, 10 for \$10.00. 6 to 8 feet, \$1.00 each, 10 for \$8.00.

Maple, Norway. This is one of the hardiest ornamental shade trees, and one of the most beautiful. It makes more of a wide spreading tree than the sugar maple.

Wholesale Price 10 to 12 feet, \$2.50 each, 10 for \$22.50. 8 to 10 feet, \$2.25 each, 10 for \$20.00.



NORWAY MAPLE

ORNAMENTAL TREES—Continued

Maple, Silver-Leaved or Soft. Foliage bright green above and silvery underneath. An exceedingly rapid grower. Makes a large tree. A very satisfactory tree to plant in large quantities.

Wholesale Price of Silver-Leaved Maple, 10-12 feet, \$1.75 each, 10 for \$13.50; 8 to 10 feet, \$1.25 each, 10 for \$11.00.

Maple, Sugar or Rock. This native tree of ours is a universal favorite for street planting, and desirable everywhere. It is considered a slow grower, but is long-lived.

Wholesale Price, 8 to 10 feet, \$1.50 each, 10 for \$12.50; 6 to 8 feet \$1.25 each, 10 for \$10.00.

Maple, Wier's Cut-Leaved. One of the most remarkable and beautiful trees, with cut or dissected foliage. Its growth is rapid, shoots slender and drooping, as graceful as cut-leaved birch.

Wholesale Price, 8 to 10 feet, \$1.50 each, 10 for \$12.50; 6 to 8 feet, \$1.25 each, 10 for \$10.00.

Mulberry Downing. This tree is not alone valuable for the large refreshing berries it bears, but is very handsome as a lawn or street tree. This should be in every yard or garden.

Wholesale Price, 5 to 6 feet, \$1.00 each, \$7.50 per 10.

Mulberry Russian. Very hardy, vigorous grower, very productive, fruit black and of medium size.

Wholesale Price, 5 to 7 feet, \$1.00 each, 10 for \$7.50.

Mulberry, Tea's Weeping. The most graceful and hardy weeping tree in existence. Forms a perfect shaped head, with long, slender, willowy branches, drooping to the ground.

Wholesale Price, 5 feet, \$2.50 each.

Poplar, Carolina. This tree takes front rank among the best of the poplars. It is one of the most rapid growers among shade trees, frequently growing eight feet during one season and thus making fine shade in two or three years. It is very desirable when planted at the roadside, in parks or along rivers and streams. It has an advantage over other shade trees because it will grow in any kind of soil.

Wholesale Bargain Prices for Carolina Poplar trees 10 to 12 feet high, 75 cents each, 10 for \$6.00, 100 for \$40.00.

8 to 10 feet high, 65 cents each, 10 for \$5.00, 100 for \$30.00.

6 to 8 feet high, 55 cents each, 10 for \$4.00, 100 for \$20.00.

Poplar, Lombardy. A well known variety from its tall spire-like form. Where it is desired to mark a boundary line, or where there is an entrance to a driveway these trees are very effective. We have some beautiful specimens and can recommend them highly. They transplant safely, grow quickly and for many purposes are attractive and desirable.

Wholesale Price, 8 to 10 feet, 35 cents each, \$7.50 per 10, \$50.00 per 100.

Thorn, Double Pink. Double pink or rose flowers with white tips.

Wholesale Price for first class Trees, 4 to 5 feet, \$1.50 each.

Thorn, Paul's Double Scarlet. Flowers deep crimson with scarlet shade; very double.

Wholesale Price of Trees, 4 to 5 feet, \$1.50 each.

Bechtel's Crab. When in bloom appears to be covered with delicate pink, perfectly double small roses of delicious fragrance.

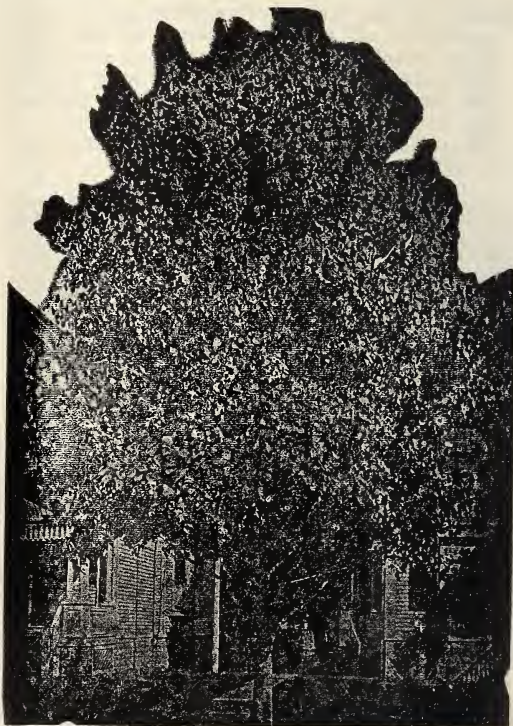
Wholesale Price for first class trees, 4-5 ft. 75c each.



WIER'S CUT-LEAF MAPLE

Willow Babylonica. Our common well-known weeping variety; forms a large round-headed, graceful tree; requires plenty of room, and where space can be spared, is quite desirable.

Wholesale Price, 7 to 8 feet, 75 cents each.





Practical Collections Compiled For Garden Planting

Maloney Garden Collection No. 9

- 6 Trees, Value \$5.05 for \$4.50
- 1 Wealthy Apple
 - 1 Montmorency Sour Cherry
 - 1 York State Prune
 - 1 Bartlett Std. Pear
 - 1 Elberta Peach
 - 1 Napoleon Sweet Cherry

All strictly first class 2 year 6-7 feet high.

Maloney Special Price, \$4.50

Quince Tree Collection No. 9

- 4 Trees, value \$3.80 for \$3.25

- 2 Orange
- 1 Meeches Prolific
- 1 Champion

All strictly first class, 2 year 4-6 feet high.

Maloney Special Price, \$3.25

Peach Tree Collection No. 20

- 5 Trees, value \$3.75 for \$3.25

- 1 Hale
- 1 Elberta
- 1 Rochester
- 1 Early Crawford
- 1 Fitzgerald

All strictly first class, 1 year, 5-6 feet high.

Maloney Special Price, \$3.25

Sweet Cherry Tree Collection No. 16

- 5 Trees, value \$4.50 for \$4.00

- 1 Gov. Wood
- 1 Napoleon
- 2 Lambert
- 1 Windsor

All strictly first class, 2 year 6-7 feet high.

Maloney Special Price, \$4.00

Plum Tree Collection No. 13

- 5 Trees, value \$4.50 for \$4.00

- 1 Bradshaw
- 1 Burbank
- 1 Pond Seedling
- 1 Reine Claude
- 1 York State Prune

All strictly first class, 2 year 6-7 feet high.

Maloney Special Price, \$4.00

Everybody's Favorite Collection No. 9

- 31 Trees and Plants, value \$8.25 for \$7.50

- 1 Clapps Favorite Pear
- 1 Montmorency Sour Cherry
- 1 Grand Duke Plum
- 1 Baldwin Apple
- 1 Windsor Sweet Cherry
- 1 Elberta Peach

All strictly first class, 6-7 feet high.

- 1 Concord Grape
- 1 Catawba Grape
- 1 Niagara Grape
- 2 Wilder Currant
- 10 Cuthbert Red Raspberries
- 10 Kansas Black Raspberries

Maloney Special Price \$7.50

Apple Tree Collection No. 20

- 5 Trees, value \$3.75 for \$3.25

Summer Variety

- 1 Duchess

Fall Varieties

- 1 Alexander
- 1 Maiden's Blush

Winter Varieties

- 1 Wealthy
- 1 Winter Banana

All strictly first class, 2 year 6-7 feet high.

Maloney Special Price, \$3.25

Dwarf Apple Tree Collection No. 10

- 4 Trees, value \$3.40 for \$3.00

- 1 Yellow Trans. (ea. summer)
- 1 Duchess (streaked) ea. fall
- 1 Wagener (red) winter
- 1 McIntosh (red) winter

All strictly first class, 2 year 4-5 feet high.

Maloney Special Price, \$3.00

Sour Cherry Tree Collection No. 20

- 5 trees, value \$4.50 for \$4.00

- 2 Early Richmond
- 1 Eng. Morello
- 2 Montmorency

All strictly first class, 2 year 6-7 feet high.

Maloney Special Price, \$4.00

Standard Pear Collection No. 10

- 5 Trees, value \$4.25 for \$3.75

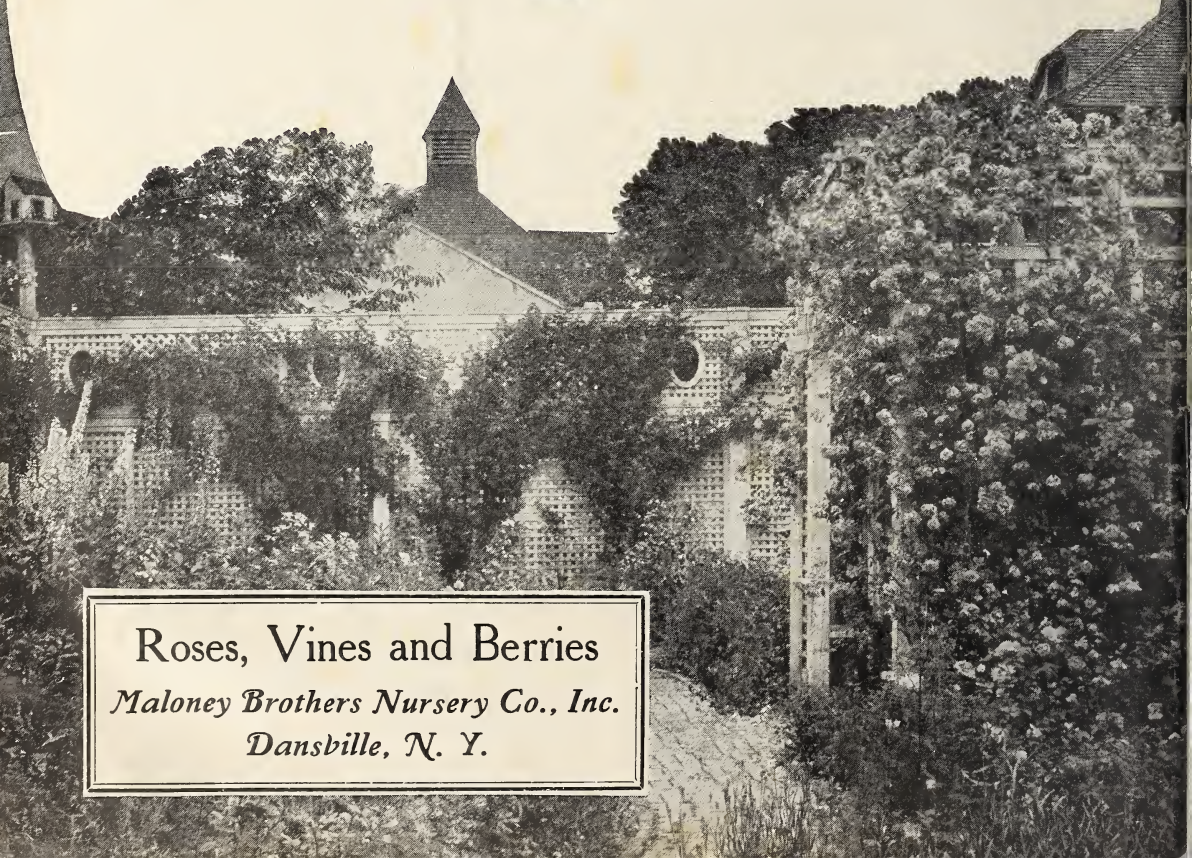
- 1 Sheldon
- 1 Buerre Bosc
- 1 Seckel
- 2 Bartlett

All strictly first class, 2 year 6-7 feet high.

Maloney Special Price, \$3.75



Kansas Black Raspberry



Roses, Vines and Berries

Maloney Brothers Nursery Co., Inc.

Dansville, N. Y.